

# The AGN fuelling/feedback cycle in nearby radio galaxies

## I. ALMA observations and early results.

Ilaria Ruffa,<sup>1,2\*</sup> Isabella Prandoni,<sup>2</sup> Robert Laing,<sup>3</sup> Rosita Paladino,<sup>2</sup> Paola Parma,<sup>2</sup>  
Hans de Ruiter,<sup>2</sup> Arturo Mignano,<sup>2</sup> Timothy A. Davis,<sup>4</sup> Martin Bureau,<sup>5,6</sup> Joshua Warren<sup>5</sup>

<sup>1</sup>*Dipartimento di Fisica e Astronomia, Università degli Studi di Bologna, via P. Gobetti 93/2, 40129 Bologna, Italy*

<sup>2</sup>*INAF - Istituto di Radioastronomia, via P. Gobetti 101, 40129 Bologna, Italy*

<sup>3</sup>*Square Kilometre Array Organisation, Jodrell Bank Observatory, Lower Withington, Macclesfield, Cheshire SK11 9DL, UK*

<sup>4</sup>*School of Physics & Astronomy, Cardiff University, Queens Buildings, The Parade, Cardiff CF24 3AA, UK*

<sup>5</sup>*Sub-dept. of Astrophysics, Dept. of Physics, University of Oxford, Denys Wilkinson Building, Keble Road, Oxford OX1 3RH, UK*

<sup>6</sup>*Yonsei Frontier Lab and Department of Astronomy, Yonsei University, 50 Yonsei-ro, Seodaemun-gu, Seoul 03722, Republic of Korea*

Accepted XXX. Received YYY; in original form ZZZ

### ABSTRACT

This is the first paper of a series exploring the multi-frequency properties of a sample of eleven nearby low excitation radio galaxies (LERGs) in the southern sky. We are conducting an extensive study of different galaxy components (stars, warm and cold gas, radio jets) with the aim of improving our understanding of the AGN fuelling/feedback cycle in LERGs. We present ALMA Band 6 <sup>12</sup>CO(2-1) and continuum observations of nine sources. Continuum emission from the radio cores was detected in all objects. Six sources also show mm emission from jets on kpc/sub-kpc scales. The jet structures are very similar at mm and cm wavelengths. We conclude that synchrotron emission associated with the radio jets dominates the continuum spectra up to 230 GHz. The <sup>12</sup>CO(2-1) line was detected in emission in six out of nine objects, with molecular gas masses ranging from  $2 \times 10^7$  to  $2 \times 10^{10} M_{\odot}$ . The CO detections show disc-like structures on scales from  $\approx 0.2$  to  $\approx 10$  kpc. In one case (NGC 3100) the CO disc presents some asymmetries and is disrupted in the direction of the northern radio jet, indicating a possible jet/disc interaction. In IC 4296, CO is detected in absorption against the radio core as well as in emission. In four of the six galaxies with CO detections, the gas rotation axes are roughly parallel to the radio jets in projection; the remaining two cases show large misalignments. In those objects where optical imaging is available, dust and CO appear to be co-spatial.

**Key words:** galaxies: elliptical and lenticular, cD – galaxies: ISM – galaxies: active – galaxies: nuclei – galaxies: jets

## 1 INTRODUCTION

It is widely believed that feedback processes associated with active galactic nuclei (AGN) can potentially play a fundamental role in shaping galaxies over cosmic time (e.g. Ciotti 2009; Ciotti et al. 2010; Debuhr et al. 2012; King & Pounds 2015; Harrison et al. 2018). AGN feedback can change the physical conditions of the surrounding interstellar medium (ISM), preventing gas cooling or even expelling the gas from the nuclear regions, thus impacting star formation processes and the subsequent evolution of the host galaxy (e.g. Combes 2017; Harrison 2017). Two main variants of feedback are commonly discussed: radiative and kinetic. The former is typically associated with a radiatively efficient (quasar-like) AGN; the latter with an energetic outflow or jet (e.g. Best & Heckman 2012; Alexander & Hickox 2012; Heckman & Best 2014). Radio

jets produce some of the clearest manifestations of AGN feedback such as cavities in the hot intracluster gas and jet-driven outflows in the ISM (see e.g. Fabian 2012, for a review).

In the local Universe, radio galaxies (RGs), which by definition show strong kinetic (jet-induced) feedback, are typically hosted by the most massive early type galaxies (ETGs). They can be divided into two classes according to their optical spectra (e.g. Heckman & Best 2014). High-excitation radio galaxies (HERGs) have spectra showing strong, quasar/Seyfert-like emission lines, accrete at  $\geq 0.01 \dot{M}_{\text{Edd}}$  (where  $\dot{M}_{\text{Edd}}$  is the Eddington accretion rate<sup>1</sup>) and are radiatively efficient, thereby producing radiative as well as kinetic

<sup>1</sup>  $\dot{M}_{\text{Edd}} = \frac{4\pi G M_{\text{SMBH}} m_{\text{p}}}{\varepsilon c \sigma_{\text{T}}}$ , where  $G$  is the gravitational constant,  $M_{\text{SMBH}}$  is the mass of the central super-massive black hole (SMBH),  $m_{\text{p}}$  is the mass of the proton,  $\varepsilon$  is the accretion efficiency,  $c$  is the speed of light and  $\sigma_{\text{T}}$  is the cross-section for Thomson scattering.

\* E-mail: i.ruffa@ira.inaf.it

feedback. Low-excitation radio galaxies (LERGs) have spectra with weak, LINER-like emission lines, accrete at  $\ll 0.01 \dot{M}_{\text{Edd}}$  and their feedback is almost entirely kinetic. It has been proposed that the dichotomy in accretion rate is a consequence of different trigger mechanisms and fuelling sources (e.g. [Hardcastle et al. 2007](#)). In this scenario, HERGs are fuelled by cold gas transported to their nuclei through merging or collisions with gas-rich galaxies, whereas LERGs are powered by direct accretion from the hot phase of the inter-galactic medium (IGM). [Allen et al. \(2006\)](#) supported the hot accretion scenario, finding a correlation between the jet power of LERGs and the Bondi accretion rate (i.e. the rate of spherical accretion of the hot, X-ray emitting medium; [Bondi 1952](#)). [Russell et al. \(2013\)](#) later reported a lower significance level for that correlation, however. More realistic models for LERGs, requiring chaotic accretion, were first proposed by [Sanders \(1981\)](#) and then elaborated by several authors, based on results from numerical simulations (see e.g. [King & Pringle 2007](#); [Wada et al. 2009](#); [Nayakshin et al. 2012](#); [Gaspari et al. 2013](#); [King & Pounds 2015](#); [Gaspari et al. 2015, 2017](#)). In this mechanism (now referred to as *chaotic cold accretion*) the hot gas from the galaxy halo cools to temperatures lower than  $10^3$  K and forms dense clouds of cold gas. Within a few Bondi radii<sup>2</sup> chaotic inelastic collisions between the clouds are frequent enough to cancel their angular momentum, allowing them to accrete onto the SMBH.

The most compelling evidence that cold gas can play a role in fuelling LERGs is that it is frequently detected in these sources, with masses that are potentially capable of powering the jets by accretion ( $M_{\text{H}_2} \sim 10^7 - 10^{10} M_{\odot}$ , e.g. [Prandoni et al. 2007, 2010](#); [Ocaña Flaquer et al. 2010](#)). Hints of cold gas clouds falling towards active nuclei have recently been observed in some objects (e.g. [Tremblay et al. 2016](#); [Maccagni et al. 2018](#)), providing support for this hypothesis. The presence of cold gas alone is not direct evidence of fuelling, however. For example, the cold gas in 3C 31 is found to be in ordered rotation and stable orbits ([Okuda et al. 2005](#)): in cases like this the accretion rate may be relatively low. In other galaxies, the molecular gas appears to be outflowing or interacting with the radio jets, rather than infalling (e.g. [Alatalo et al. 2011](#); [Combes et al. 2013](#); [Oosterloo et al. 2017](#)). The origin of the observed gas also remains unclear: it may cool from the hot gas phase or come from stellar mass loss, interactions or minor mergers.

Our project aims at exploring the multi-frequency properties of a complete flux and volume-limited sample of eleven local LERGs in the southern sky. The purpose is to carry out an extensive study of the various galaxy components (stars, warm and cold gas, radio jets) to get a better understanding of the AGN fuelling/feedback cycle in LERGs, using the ATLAS<sup>3D</sup> galaxies as a radio-quiet control sample ([Cappellari et al. 2011](#)). In this framework we have acquired Atacama Pathfinder EXperiment (APEX)  $^{12}\text{CO}(2-1)$  integrated spectra ([Prandoni et al. 2010](#), Laing et al. in preparation, hereafter Paper II), Very Large Telescope (VLT) Visible Multi Object Spectrograph (VIMOS) integral-field-unit spectroscopy for the entire sample ([Warren et al.](#), in preparation) and Karl G. Jansky Very Large Array (JVLA) high-resolution continuum observations at 10 GHz for five sources ([Ruffa et al.](#), in preparation). Archival Hubble Space Telescope (HST) or ground-based optical/near-IR and VLA images are also used, when available.

<sup>2</sup> The Bondi radius is given by  $r_{\text{B}} = \frac{2G M_{\text{SMBH}}}{c_s^2}$ , where  $G$  is the gravitational constant,  $M_{\text{SMBH}}$  is the mass of the SMBH, and  $c_s$  is the speed of sound.

In this paper, we present Atacama Large Millimeter/submillimeter Array (ALMA) Cycle 3  $^{12}\text{CO}(2-1)$  and 230 GHz continuum observations of nine objects. The paper is structured as follows. In Section 2 we present the sample, describing the selection criteria and available data. In Section 3 we describe the ALMA observations and data reduction; the analysis performed on the data products is detailed in Section 4. In Section 5 we present the results for individual galaxies. General properties of the sample are discussed in the context of earlier work in Section 6. We summarise our conclusions in Section 7. In Appendix A, included as supplementary material in the on-line version of the paper, we present a brief description of the re-analysed archival VLA data and optical/IR imaging used in our analysis.

Throughout this work we assume a standard  $\Lambda$ CDM cosmology with  $H_0 = 70 \text{ km s}^{-1} \text{ Mpc}^{-1}$ ,  $\Omega_{\Lambda} = 0.7$  and  $\Omega_{\text{M}} = 0.3$ . All of the velocities in this paper are given in the optical convention.

## 2 THE SOUTHERN RADIO GALAXY SAMPLE

We have defined a complete volume- and flux-limited sample of eleven RGs in the southern sky. This sample was selected from [Ekers et al. \(1989\)](#), who presented a complete sample of 91 radio galaxies from the Parkes 2.7-GHz survey, all located in the declination range  $-17^\circ < \delta < -40^\circ$ , with a radio flux-density limit of 0.25 Jy at 2.7 GHz and an optical magnitude limit of  $m_{\text{v}} = 17.0$ . From this sample, we selected those sources satisfying the following criteria:

- (i) elliptical/S0 galaxy optical counterpart;
- (ii) host galaxy redshift  $z < 0.03$ .

This resulted in a sample of eleven radio galaxies, all with low or intermediate 1.4 GHz radio powers:  $P_{1.4\text{GHz}} \leq 10^{25.5} \text{ W Hz}^{-1}$ . The majority of the sources have FR I radio morphologies ([Fanaroff & Riley 1974](#)); one is classified as intermediate between FR I and FR II and one as FR II. Based on the available optical spectroscopy ([Tadhunter et al. 1993](#); [Smith et al. 2000](#); [Colless et al. 2003](#); [Collobert et al. 2006](#); [Jones et al. 2009](#)), all of the radio galaxies in our southern sample have [OIII] line luminosities below the relation shown in Fig. 2 of [Best & Heckman \(2012\)](#) and, as argued in that paper, can be securely classified as LERGs. The main characteristics of our southern sample galaxies are listed in Table 1.

## 3 ALMA OBSERVATIONS AND DATA REDUCTION

We used ALMA Band 6 ( $\approx 230$  GHz) to observe nine of the sample members. Two sources were excluded because the estimated integration times were unreasonably long. In NGC 1316 (PKS 0320–37, Fornax A) the CO is known to be distributed over an area much larger than the single-pointing field-of-view (FOV) of the ALMA main array at 230 GHz ([Horellou et al. 2001](#)); a large mosaic and short-spacing information would be required to image it adequately. Based on measurements with APEX (Paper II), NGC 1399 (PKS 0336–35) appeared to be too faint for a reliable detection.

ALMA observations were taken during Cycle 3, between March and July 2016 (PI: I. Prandoni). Table 2 summarises the details of the observations. The total time on-source ranged from 3 to 30 minutes. The spectral configuration consisted of four spectral windows: one centred on the redshifted frequency ( $\nu_{\text{sky}}$ ) of the  $^{12}\text{CO}(J=2-1)$  line (rest frequency 230.5380 GHz) and divided into 1920 1.129 MHz-wide channels; the other three, used to map

**Table 1.** General properties of the southern radio galaxy sample.

Radio source	Host galaxy	$z$	$S_{1.4}$	$\log P_{1.4}$	FR class	$D_L$	$v_{\text{opt}}$
(1)	(2)	(3)	(Jy)	( $\text{W Hz}^{-1}$ )	(6)	(Mpc)	( $\text{km s}^{-1}$ )
(1)	(2)	(3)	(4)	(5)	(6)	(7)	(8)
PKS 0007–325	IC 1531	0.0256	0.5	23.9	I	112.0	$7681 \pm 25$
PKS 0131–31	NGC 612	0.0298	5.6	25.1	I/II	130.4	$8913 \pm 29$
PKS 0320–37	NGC 1316	0.0058	150	25.1	I	25.3	$1734 \pm 10$
PKS 0336–35	NGC 1399	0.0047	2.2	23.0	I	20.4	$1408 \pm 4$
PKS 0718–34	–	0.0284	2.1	24.6	II	124.1	$8900 \pm 128$
PKS 0958–314	NGC 3100	0.0088	0.5	23.0	I	38.0	$2629 \pm 20$
PKS 1107–372	NGC 3557	0.0103	0.8	23.3	I	44.5	$3079 \pm 18$
PKS 1258–321	ESO 443-G 024	0.0170	1.2	23.9	I	73.9	$1689 \pm 18$
PKS 1333–33	IC 4296	0.0125	4.5	24.2	I	53.9	$3737 \pm 10$
PKS 2128–388	NGC 7075	0.0185	0.9	23.8	I	80.3	$5466 \pm 20$
PKS 2254–367	IC 1459	0.0060	1.2	23.9	I*	25.9	$1689 \pm 18$

*Notes.* Columns: (1) Name of the radio source. (2) Host galaxy name. (3) Galaxy redshift taken from the NASA/IPAC extragalactic database (NED). (4) Radio flux density at 1.4 GHz; this is the most accurate value given in NED and includes all the radio emission associated with the source. (5) Logarithmic-scale radio power at 1.4 GHz derived from  $S_{1.4}$  and  $D_L$ . (6) Fanaroff-Riley class (Fanaroff & Riley 1974). (7) Luminosity distance derived from the redshift given in column (3) and assuming the cosmology in Section 1. (8) Best estimate of the optical stellar velocity from NED, given in the LSRK system, for comparison with CO velocities in Table 5.

\*FR I structure on sub-arcsecond scale (see Tingay & Edwards 2015).

the continuum emission, had 128 31.25-MHz-wide channels. Between 36 and 43 12-m antennas were used, with maximum baseline lengths ranging from 460 m to 1.1 km. The maximum recoverable spatial scale (MRS), together with the major and minor axis full width half maxima (FWHM) and position angle of the synthesized beam for each observation are reported in Table 2. Titan and Pallas were used as primary flux calibrators; J1037–2934, J1107–4449, J2537–5311, J0538–4405 and J1427–4206 were observed as secondary standards if no solar-system object was available.

We reduced the data using the Common Astronomy Software Application (CASA; McMullin et al. 2007) package, version 4.7.2, calibrating each dataset separately using customized PYTHON data reduction scripts.

### 3.1 Continuum imaging

The three continuum spectral windows and the line-free channels in the line spectral window were used to produce the continuum maps, using the CLEAN task in multi-frequency synthesis (MFS) mode with one Taylor series term (Rau & Cornwell 2011). All the continuum maps were made using natural weighting in order to maximise the sensitivity, with the goal of imaging emission from the jets. Since the cores are detected at high signal-to-noise in all of the targets, multiple cycles of phase-only self calibration were performed in all cases. Additional amplitude and phase self-calibration was performed for the brightest cores only. This allowed us to obtain root-mean square (rms) noise levels ranging from 0.02 to 0.06 mJy beam<sup>-1</sup> for synthesized beams of 0.3–1 arcsec FWHM.

Two-dimensional Gaussian fits were performed within the regions covered by the continuum emission in order to estimate the spatial extent of each observed component. Table 3 summarises the main properties of the millimetre continuum maps, which are shown in Fig. 1. For each object, the upper panel shows the ALMA millimetre continuum image, while the lower panel shows an archival VLA continuum map (at 4.9, 8.5 or 14.9 GHz), chosen to match as closely as possible the angular resolution of the corresponding ALMA image. All of the archival VLA datasets used in this work have been re-analysed using self-calibration and multi-scale CLEAN as appro-

priate. Details of the VLA observations and data reduction are given in Appendix A (provided as on-line only supplementary material), together with additional VLA images showing the large-scale radio structures of four sources. Although a detailed comparison of the mm and cm continuum properties of our sources is not possible with the available archival cm-wave data, a brief analysis is provided in Sections 5 and 6.1.

### 3.2 Line imaging

After applying the continuum self-calibration, line emission was isolated in the visibility plane using the CASA task UVCONTSUB to form a continuum model from linear fits in frequency to line-free channels and to subtract it from the visibilities. We then produced a data cube of CO channel maps using the CLEAN task with natural weighting. The channel velocities were initially computed in the source frame with zero-points corresponding to the redshifted frequency of the CO(2-1) line ( $v_{\text{sky}}$ , Table 2). The continuum-subtracted dirty cubes were cleaned in regions of line emission (identified interactively) to a threshold equal to 1.5 times the rms noise level, determined in line-free channels. Several channel widths (i.e. spectral bins) were tested to find a good compromise between signal-to-noise ratio (S/N) and resolution of the line profiles; the final channel widths range from 10 to 40 km s<sup>-1</sup>.

We clearly detect <sup>12</sup>CO(2-1) emission in six out of nine sources, with S/N ranging from 8 to 45. The cleaned CO data cubes are characterised by rms noise levels (determined in line-free channels) between 0.2 and 1.3 mJy beam<sup>-1</sup>.

Three targets (PKS 0718–34, ESO 443–G 024 and IC 1459) are undetected in CO. In these cases, line emission (and consequently line-free channels) could not be identified in the spectral window centred on the redshifted CO emission; the continuum was thus modelled using the three continuum spectral windows only. The continuum-subtracted dirty cubes for these targets were cleaned down to 1.5 times the expected rms noise level, with conservative spectral channel widths between 75 and 80 km s<sup>-1</sup>. The 1 $\sigma$  noise levels measured in the cleaned channel maps ranged from 0.2 to 0.6 mJy beam<sup>-1</sup>; in these cases 3 $\sigma$  upper limits are tabulated.

Table 4 summarises the properties of the CO data cubes.

## 4 IMAGE CUBE ANALYSIS

### 4.1 CO moment maps

Integrated intensity (moment 0), mean velocity (moment 1) and line velocity width (moment 2) maps of the detected lines were created from the cleaned, continuum-subtracted CO data cubes using the masked moment technique as described by Dame (2011, see also Bosma 1981a,b; van der Kruit & Shostak 1982; Rupen 1999). In this technique, a copy of the cleaned data cube is first Gaussian-smoothed spatially (with a FWHM equal to that of the synthesised beam) and then Hanning-smoothed in velocity. A three-dimensional mask is then defined by selecting all the pixels above a fixed flux-density threshold; this threshold is chosen so as to recover as much flux as possible while minimising the noise. We used thresholds varying from 1.2 to  $2\sigma$ , depending on the significance of the CO detection (higher threshold for noisier maps). The moment maps were then produced from the un-smoothed cubes using the masked regions only (e.g. Davis et al. 2017). The resulting maps are shown in Figs 2 – 7, where the velocity zero-points are defined to be the intensity-weighted centroids of the observed CO emission. Based on their moment 0 and moment 1 maps, all detections show clear evidence of gas rotation, associated with discs or ring-like structures. There is evidence for asymmetries in the molecular gas distribution in a number of cases, particularly NGC 3100 and IC 4296 (see Sect. 5 for more details).

For completeness, we show the moment 2 maps of all the targets detected in CO. It is worth noting however that they represent intrinsic velocity broadening only for those sources detected with a high S/N and/or whose CO emission is well resolved by our ALMA observations: this is certainly the case for NGC 612 and NGC 3100. Otherwise, the velocity dispersion (i.e. line-of-sight velocity width) is likely to be dominated by partially resolved velocity gradients within the host galaxy (beam smearing; e.g. Davis et al. 2017).

The extent of the molecular gas was estimated by performing 2D Gaussian fits to the moment 0 maps within the regions covered by the CO emission. Table 5 summarises the estimated sizes, which are given as deconvolved major and minor axis FWHM. The detected discs are typically confined to kpc or sub-kpc scales except for NGC 612, whose CO disc extends for at least 9.6 kpc along its major axis.

### 4.2 Line widths and profiles

The integrated spectral profiles of the six galaxies detected in CO(2-1) were extracted from the observed data cubes within boxes including all of the CO emission. The spectral profiles are shown in Figures 2–7 (panel d). The dimensions of the boxes used to extract the spectra are indicated in the figure captions.

All of the integrated spectral profiles exhibit the classic double-horned shape expected from a rotating disc. In one case (IC 4296) a strong absorption feature was also detected (Fig. 6d). Line widths were measured as full-width at zero intensity (FWZI) as well as FWHM. The former was defined as the full velocity range covered by spectral channels (identified interactively in the channel map) with CO intensities  $\geq 3\sigma$ . These channels are highlighted in grey in Figures 2d–7d and we also tabulate the flux integrated over this range. FWHM was defined directly from the integrated spectra as the velocity difference between the two most distant channels from

the line centre with intensities exceeding half of the line peak. We did not attempt to fit models to the spectra at this stage.

For non-detections,  $3\sigma$  upper limits on the integrated flux densities were calculated from the relation (e.g. Koay et al. 2016):

$$\Sigma S_{\text{CO}} \Delta v \text{ (Jy beam}^{-1} \text{ km s}^{-1}) < 3\sigma \Delta v_{\text{FWHM}} \sqrt{\frac{\Delta v}{\Delta v_{\text{FWHM}}}} \quad (1)$$

where  $\Delta v$  is the channel width of the data cube in which the rms noise level ( $\sigma$ ) is measured (see Table 4) and  $\Delta v_{\text{FWHM}}$  is the expected line FWHM. We assumed the line FWHM measured from APEX CO(2-1) observations (Paper II; see also Table 5). The factor  $\sqrt{\Delta v / \Delta v_{\text{FWHM}}}$  accounts for the expected decrease in noise level with increasing bandwidth (Wrobel & Walker 1999). Equation 1 is only valid if all of the molecular gas is concentrated within the synthesised beam (a few hundred parsec). If, more realistically, the molecular gas is distributed on larger scales, this assumption leads to a significant underestimation of the total flux limit. In this case, an estimate of the gas surface density upper limit is more meaningful (see Section 4.3).

The CO(2-1) line parameters are listed in Table 5.  $v_{\text{CO}}$ , the intensity-weighted velocity centroids, are our best estimates of the systemic velocity of the line emission. The errors given for  $v_{\text{CO}}$  are assumed to be equal to the channel widths of the corresponding integrated spectrum. The values of  $v_{\text{CO}}$  are all consistent (within the combined errors) with the stellar velocities  $v_{\text{opt}}$  listed in Table 1.

### 4.3 Molecular gas masses

We adopted the following relation to estimate the total molecular gas masses, including contributions from heavy elements ( $M_{\text{mol}}$ ; Bolatto et al. 2013):

$$M_{\text{mol}} = \frac{1.05 \times 10^4}{R_{21}} \left( \frac{X_{\text{CO}}}{2 \times 10^{20} \frac{\text{cm}^{-2}}{\text{K km s}^{-1}}} \right) \times \left( \frac{1}{1+z} \right) \left( \frac{\Sigma S_{\text{CO}} \Delta v}{\text{Jy km s}^{-1}} \right) \left( \frac{D_{\text{L}}}{\text{Mpc}} \right)^2, \quad (2)$$

where  $\Sigma S_{\text{CO}} \Delta v$  is the CO(2-1) flux integrated over velocity,  $R_{21}$  is the CO(2-1) to CO(1-0) flux ratio,  $z$  is the galaxy redshift,  $D_{\text{L}}$  is the luminosity distance, and  $X_{\text{CO}}$  is the CO-to- $\text{H}_2$  conversion factor.  $X_{\text{CO}}$  depends on the molecular gas conditions (e.g. excitation, dynamics, geometry) and the properties of the environment (e.g. metallicity; see Bolatto et al. 2013) and is therefore likely to vary systematically between different galaxy types. Little is known about  $X_{\text{CO}}$  in nearby ETGs, because most studies are focused on gas-rich (and high gas metallicity) populations, typically late-type galaxies. Following Bolatto et al. (2013) and Tremblay et al. (2016), we assume the average Milky Way value of  $X_{\text{CO}} = 2 \times 10^{20} \text{ cm}^{-2} \text{ K km s}^{-1}$ .

Another important uncertainty concerns the CO(2-1) to CO(1-0) flux ratio,  $R_{21}$ , which depends on optical depth and excitation conditions of the molecular gas (e.g. Braine & Combes 1992).  $R_{21}$  can vary significantly between objects. Measurements of  $R_{21}$  have been made for gas-rich disc galaxies (e.g. Sandstrom et al. 2013) and for radio-quiet ETGs (e.g. Young et al. 2011), but little is known about local radio-loud ETGs. The presence of a radio-loud AGN can significantly affect the conditions of the molecular gas in the surrounding regions (e.g. Oosterloo et al. 2017), but it is not clear whether such phenomena are common.

To date, the best estimate of  $R_{21}$  for radio galaxies comes from the CO(2-1) to CO(1-0) brightness temperature ratios measured by Ocaña Flaquer et al. (2010). The mean ratio for 15 radio-loud



**Table 2.** ALMA Cycle 3 observations.

Target	Date	$\nu_{\text{sky}} (\nu_{\text{cen}})$ (GHz) (km s <sup>-1</sup> )	Time (min)	MRS (kpc, arcsec)	$\theta_{\text{maj}}$ (arcsec)	$\theta_{\text{min}}$ (arcsec)	PA (deg)	Scale (pc)
(1)	(2)	(3)	(4)	(5)	(6)	(7)	(8)	(9)
IC 1531	2016-06-02	224.7774 (7702)	12.0	5.6, 10.9	0.7	0.6	87	360
NGC 612	2016-07-30	223.8426 (8974)	3.0	6.6, 11.0	0.3	0.3	-75	180
PKS 0718-34	2016-05-02	223.8622 (8904)	32.2	6.3, 11.0	0.7	0.6	-80	400
	2016-05-03							
NGC 3100	2016-03-22	228.6299 (2484)	28.5	1.9, 10.6	0.9	0.7	-87	160
NGC 3557	2016-06-03/04	228.2319 (2999)	22.5	2.0, 9.7	0.6	0.5	-70	130
ESO 443-G 024	2016-05-01	226.6839 (5089)	24.2	3.7, 10.8	0.7	0.6	-63	240
IC 4296	2016-06-04	227.7110 (3705)	25.5	2.8, 10.8	0.6	0.6	-84	150
	2016-06-11							
NGC 7075	2016-05-03	226.4196 (5483)	24.5	4.1, 10.8	0.6	0.6	-76	230
IC 1459	2016-04-11	229.1614 (1819)	11.4	1.3, 10.7	1.0	0.8	-71	120

*Notes.* – Columns: (1) Target name. (2) Observation dates. (3) <sup>12</sup>CO(2-1) redshifted (sky) centre frequency estimated using the redshift listed in column (3) of Table 1; the corresponding velocity ( $\nu_{\text{cen}}$ ; LSRK system, optical convention) is reported in parentheses. (4) Total integration time on-source. (5) Maximum recoverable scale in kiloparsec for the array configuration, and corresponding scale in arcseconds. (6) Major axis FWHM of the synthesized beam. (7) Minor axis FWHM of the synthesized beam. (8) Position angle of the synthesized beam. (9) Spatial scale corresponding to the major axis FWHM of the synthesized beam.

ETGs observed in both CO transitions with the Institut de Radioastronomie Millimétrique (IRAM) 30m telescope is 2.32. This is the same as the flux density ratio provided that the CO emission is unresolved, since the ratios of the square of wavelength and the beam size cancel precisely (e.g. David et al. 2014; Temi et al. 2018). We therefore take  $R_{21} = 2.32$ . We plan to test this assumption directly through observations of different CO transitions for our sample.

The estimated molecular masses range from  $2.0 \times 10^7$  to  $2.0 \times 10^{10} M_{\odot}$ ; upper limits for the non-detections are in the range  $1.0 - 6.7 \times 10^6 M_{\odot}$ . As discussed in the previous section, these upper limits will be underestimated if the CO emission is resolved. We have therefore also measured values or limits for the CO surface density ( $\Sigma_{\text{CO}}$ ). For the detected sources, values averaged over the area covered by the CO emission range from 900 to few thousands of  $M_{\odot} \text{pc}^{-2}$ . Limits for the undetected sources are typically a few hundred  $M_{\odot} \text{pc}^{-2}$ . Values and limits for  $M_{\text{mol}}$  and  $\Sigma_{\text{CO}}$  are listed in Table 5.

## 5 RESULTS: INDIVIDUAL SOURCES

### IC 1531 (PKS 0007-325)

IC 1531 is a barred lenticular galaxy (SB0) in a low-density environment (O’Sullivan et al. 2007), with a FRI radio structure (Van Velzen et al. 2012).

We detect a bright nuclear source in the continuum (Fig. 1a, top panel). Emission from the South-East jet is also detected. The archival VLA image of IC 1531 at 8.4 GHz (Fig. 1a, bottom panel) shows similar core-jet structure. No counter-jet to the North-West is detected at either frequency.

A disc of molecular gas is detected at  $18\sigma$  significance (Fig. 2a). The disc is barely resolved in our observation, with a deconvolved major axis FWHM of 250 pc (Table 5). The estimated molecular gas mass is  $1.1 \times 10^8 M_{\odot}$ . The mean velocity map in Figure 2b shows a rotation pattern with an (s-shaped) distortion in the zero-velocity contour (i.e. the kinematic centre), possibly suggesting the presence of a warp in the molecular gas disc. This needs to be confirmed with higher resolution observations. The integrated spectral profile in Figure 2d exhibits the double-horned shape of a

rotating disc. The line width (Fig. 2c) is likely to be dominated by beam smearing.

### NGC 612 (PKS 0131-36)

NGC 612 is a peculiar lenticular galaxy viewed close to edge-on, characterised by an extensive and strongly warped dust distribution in the equatorial plane and by a massive stellar disc (Westerlund & Stokes 1966; Fasano et al. 1996; Duah Asabere et al. 2016). The presence of a stellar disc is exceptional for extended radio galaxies, at least in the luminosity range  $10^{22} - 10^{25}$  (e.g. Ekers et al. 1978; Véron-Cetty & Véron 2001; Emons et al. 2008; Morganti et al. 2011; Mao et al. 2015, and references therein). NGC 612 is one of the few examples known to date. A 140 kpc-wide disc of atomic hydrogen (HI) with  $M_{\text{HI}} = 1.8 \times 10^9 M_{\odot}$  was detected by Emons et al. (2008). A faint outer bridge of HI connects NGC 612 with the barred galaxy NGC 619, roughly 400 kpc away. This suggests that a past interaction between the two galaxies (or a minor merger event) may have channelled large amounts of gas and dust into NGC 612, also triggering the associated radio source. The large-scale radio map at 4.9 GHz published by Morganti et al. (1993, a re-imaged version is presented in Fig. A1) shows a weak core, a bright hot-spot at the outer edge of the more prominent eastern lobe, and a more diffuse western lobe with a total radio power  $P_{1.4 \text{ GHz}} = 1.5 \times 10^{25} \text{ W Hz}^{-1}$ .

We detect a marginally-resolved nuclear source in the continuum map of NGC 612 (Fig. 1b, upper panel). Continuum emission from the central region of the extended radio source is also visible in an archival VLA 4.9 GHz map (Fig. 1b, bottom panel) but at much lower resolution. We detect a large-scale disc of molecular gas with an extent of 9.6 kpc along the major axis, by far the largest in our sample. The molecular gas distribution appears clumpy (Fig. 3a). The estimated molecular gas mass is  $2.0 \times 10^{10} M_{\odot}$ , larger by about two orders of magnitude than that of any other sample member (see Table 5). The mean velocity map (Fig. 3b) shows a regularly rotating disc with some asymmetries at its extreme edges, where the major axis of the velocity field changes orientation, suggesting the presence of a warp on large scales. A well-defined double-horned shape is visible in the integrated spectrum (Figure 3d), with some asymmetries reflecting those in the gas distribution, the higher peak

**Table 3.** Properties of the ALMA continuum images.

Target (1)	rms (mJy beam <sup>-1</sup> ) (2)	S <sub>230</sub> (mJy) (3)	Size FWHM (arcsec <sup>2</sup> ) (4) (pc <sup>2</sup> ) (5)		PA (deg) (6)
IC 1531 core	0.05	108±10.5 105±10.5	(0.3 × 0.1)	(65 × 50)	141±19
SE jet <sup>1</sup>		3.0±0.3	–	–	–
NGC 612 core	0.06	29±2.9 29±2.9	(0.03 × 0.01)	(20 × 10)	137±44
PKS 0718-34 core	0.02	17±1.4 14±1.4	(0.1×0.08)	(60×50)	107±38
NE jet		1.0±0.1	(3.1×1.5)	(1800×860)	33±5
SW jet		1.5±0.1	(5.6×1.0)	(3200×570)	49±2
NGC 3100 core	0.02	50±4.3 43±4.3	(0.11×0.05)	(20×10)	170±89
N jet		2.2±0.2	(2.4×1.0)	(440×180)	167±2
S jet		4.3±0.4	(1.6×0.7)	(290×130)	164±4
NGC 3557 core	0.03	30±2.5 25±2.5	(0.11×0.1)	(23×20)	62±22
E jet		2.0±0.2	(4.1×0.7)	(870×150)	77±2
W jet		2.5±0.2	(5.4×0.6)	(1145×130)	77±3
ESO 443-G 024 core	0.02	61±5.3 53±5.3	(0.1×0.08)	(35×30)	111±19
SE jet		2.3±0.2	(2.5×1.3)	(870×450)	115±4
NW jet		5.3±0.5	(4.5×1.0)	(1570×350)	115±2
IC 4296 core	0.02	190±19.0 190±19.0	(0.1×0.1)	(30×30)	61±35
NGC 7075 core	0.02	19±1.7 17±1.7	(0.1×0.07)	(40×30)	70±40
E jet <sup>1</sup>		1.8±0.1	–	–	–
IC 1459 <sup>2</sup>	0.03	217±21	(0.08×0.06)	(10×7)	124±12

*Notes.* – Columns: (1) Target name. (2)  $1\sigma$  rms noise level measured in emission-free regions of the cleaned continuum map. (3) 230 GHz continuum flux density; the total, core and jet flux densities are quoted separately. The uncertainties are estimated as  $\sqrt{\text{rms}^2 + (0.1 \times S_{230})^2}$ , and the second term dominates in all cases. Errors on total flux densities are obtained through error propagation. (4) Size (FWHM) deconvolved from the synthesized beam. The sizes were estimated by performing 2–D Gaussian fits to identifiable continuum components. (5) Spatial extent of each component corresponding to the angular sizes in column (4). (6) Position angle of the corresponding component, defined North through East.

<sup>1</sup>Unresolved component.

<sup>2</sup>The FR I structure of this source is on milli-arcsecond (mas) scales ( $\leq 40$  mas; [Tingay & Edwards 2015](#)) and is unresolved in our images.

**Table 4.** Properties of the <sup>12</sup>CO(2-1) line images.

Target (1)	rms (mJy beam <sup>-1</sup> ) (2)	Peak flux (mJy beam <sup>-1</sup> ) (3)	S/N (4)	$\Delta v_{\text{chan}}$ (km s <sup>-1</sup> ) (5)
IC 1531	0.7	12.4	18	20
NGC 612	1.3	18.3	14	20
PKS 0718-34	0.2	< 0.6	–	80
NGC 3100	0.6	28.3	45	10
NGC 3557	0.4	16.3	38	22
ESO 443-G 024	0.2	< 0.6	–	75
IC 4296	0.2	2.0	8	40
NGC 7075	0.4	4.0	10	40
IC 1459	0.6	< 1.8	–	80

*Notes.* – Columns: (1) Target name. (2)  $1\sigma$  rms noise level measured in line-free channels at the channel width listed in column (5). (3) Peak flux density of the line emission. (4) Peak signal-to-noise ratio of the detection. (5) Final channel width of the data cube (km s<sup>-1</sup> in the source frame).

**Table 5.** Main  $^{12}\text{CO}(2-1)$  line integrated parameters.

Target (1)	Line FWHM ( $\text{km s}^{-1}$ ) (2)	Line FWZI ( $\text{km s}^{-1}$ ) (3)	$\Sigma\Sigma_{\text{CO}}\Delta v$ ( $\text{Jy km s}^{-1}$ ) (4)	$M_{\text{mol}}$ ( $M_{\odot}$ ) (5)	$v_{\text{CO}}$ ( $\text{km s}^{-1}$ ) (6)	Size FWHM ( $\text{kpc}^2$ ) (7)	$\Sigma_{\text{CO}}$ ( $M_{\odot} \text{pc}^{-2}$ ) (8)
IC 1531	260	260	$2.0 \pm 0.2$	$(1.1 \pm 0.1) \times 10^8$	$7686 \pm 20$	$(0.25 \pm 0.05) \times (0.22 \pm 0.06)$	$3.8 \times 10^3$
NGC 612	760	840	$273 \pm 27$	$(2.0 \pm 0.2) \times 10^{10}$	$8924 \pm 20$	$(9.6 \pm 0.3) \times (1.2 \pm 0.05)$	$1.0 \times 10^4$
PKS 0718-34	$334^1$	$480^1$	$< 0.1$	$< 6.7 \times 10^6$	–	–	$< 2.7 \times 10^2$
NGC 3100	340	440	$18 \pm 1.8$	$(1.2 \pm 0.1) \times 10^8$	$2600 \pm 10$	$(1.6 \pm 0.3) \times (0.5 \pm 0.08)$	$9.1 \times 10^2$
NGC 3557	440	484	$7.0 \pm 0.7$	$(6.2 \pm 0.6) \times 10^7$	$3089 \pm 22$	$(0.3 \pm 0.02) \times (0.2 \pm 0.01)$	$3.7 \times 10^3$
ESO 443-G 024	$786^1$	$1000^1$	$< 0.1$	$< 3.5 \times 10^6$	–	–	$< 3.9 \times 10^2$
IC 4296 <sup>2</sup>	760	760	$1.6 \pm 0.1$	$(2.0 \pm 0.2) \times 10^7$	$3760 \pm 40$	$(0.2 \pm 0.02) \times (0.04 \pm 0.02)$	$3.0 \times 10^3$
NGC 7075	560	600	$1.0 \pm 0.1$	$(2.9 \pm 0.2) \times 10^7$	$5510 \pm 40$	$< 0.2$	$3.3 \times 10^3$
IC 1459	$492^1$	$640^1$	$< 0.4$	$< 1.0 \times 10^6$	–	–	$< 7.6 \times 10^2$

*Notes.* – Columns: (1) Target name. (2) Line FWHM defined directly from the integrated spectra as the velocity difference between the two most distant channels from the line centre with intensities  $\geq 50\%$  of the line peak. (3) Full velocity range covered by spectral channels (identified interactively in the channel map) with CO intensities  $\geq 3\sigma$  (FWZI, grey shaded region in Figs. 2–7). (4) Integrated CO flux density measured integrating numerically over all the channels in the range defined by the FWZI. Upper limits of the undetected sources are in units of  $\text{Jy beam}^{-1} \text{km s}^{-1}$ . The velocity ranges in columns (2) – (4) are measured in the source frame. (5) Molecular gas mass derived using Equation 2. (6) CO systemic velocity in the LSRK frame (optical convention), determined numerically as the intensity-weighted centroid of the mean velocity map. (7) Size (FWHM, deconvolved from the beam) of the CO emission. (8) CO surface density over the area covered by the CO emission. The surface densities of the undetected sources were estimated over the beam area.

<sup>1</sup>The line FWHM and FWZI of undetected sources are those estimated from APEX spectra (Paper II).

<sup>2</sup>The molecular gas mass of IC 4296 is measured considering CO emission only. If the channels of the absorption feature are included (and integrated as CO emission), we obtain  $\Sigma\Sigma_{\text{CO}}\Delta v = (1.9 \pm 0.1) \text{Jy km s}^{-1}$ ,  $M_{\text{mol}} = (2.3 \pm 0.8) \times 10^7 M_{\odot}$ .

in the integrated spectrum at positive velocities being associated with the larger extent of the disc to the South. The moment 2 map (Fig. 3c) shows the “x-shaped” morphology characteristic of a rotating disc (e.g. Davis et al. 2017). The velocity dispersion varies from  $\sim 10$  to  $\sim 100 \text{ km s}^{-1}$ , but the regions characterised by line widths  $> 40 \text{ km s}^{-1}$  are highly localised, while the bulk of the disc has a dispersion  $< 30 \text{ km s}^{-1}$ .

### PKS 0718-34

PKS 0718-34 is a radio source hosted by an elliptical galaxy in a poor environment (Govoni et al. 2000a). The 4.9 GHz VLA map published by Ekers et al. (1989) shows a poorly resolved, double-sided source.

A barely resolved nuclear source is detected in the 230 GHz continuum (Fig. 1c, upper panel). Faint, double-sided emission from the jets is also detected, extending up to 3.2 kpc to the South-West and 1.8 kpc to the North-East of the nucleus. The 230 GHz continuum emission traces the radio structure observed at lower resolution in the archival 8.5 GHz VLA map (Fig. 1c, lower panel).

This object is undetected in CO, with estimated  $M_{\text{mol}} < 6.7 \times 10^6 M_{\odot}$  on the assumption of a point source, or  $\Sigma_{\text{CO}} < 2.7 \times 10^2 M_{\odot} \text{pc}^2$  (Table 5).

### NGC 3100 (PKS 0958-314)

NGC 3100 is classified as a late-type S0 galaxy: it is characterised by a patchy dust distribution, a bright nuclear component, a nuclear bulge, and weak asymmetric arm-like structures in the outer disc (Sandage & Brucato 1979; Laurikainen et al. 2006). It is located in a poor group and forms a pair with NGC 3095 (De Vaucouleurs 1976).

The 230 GHz continuum map of NGC 3100 (Fig. 1d, upper panel) shows a bright nuclear source. Extended emission from a two-sided jet is also detected. The northern and southern jets extend more than 400 pc and  $\approx 300$  pc from the nucleus, respectively. The

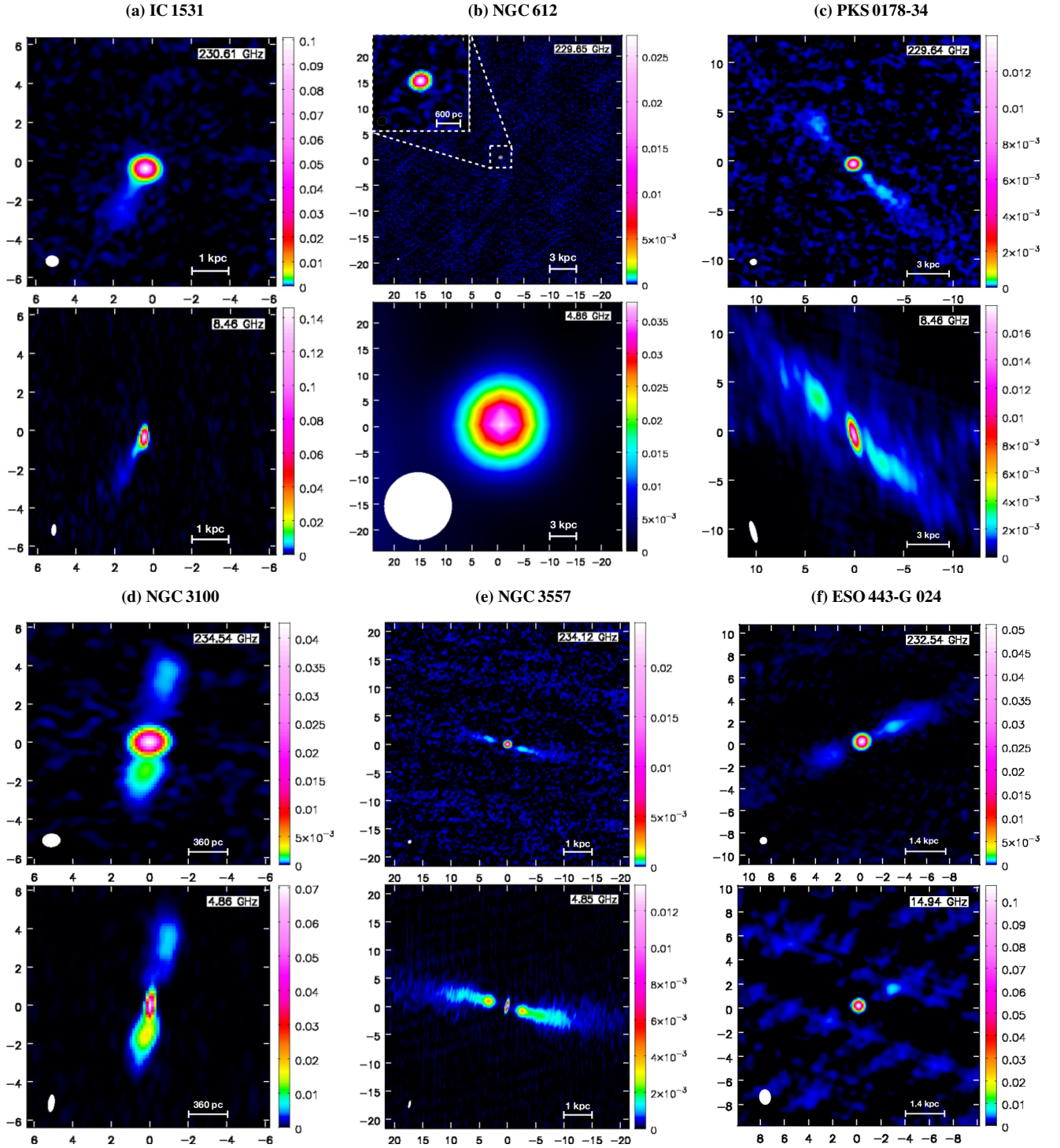
continuum structures visible at 230 GHz and at 4.9 GHz match very well (Fig. 1d).

We detect well-resolved CO(2-1) emission with a FWHM of 1.6 kpc along the major axis. The moment 0 image (Fig. 4a) shows an incomplete ring with a gap to the North-West of the nucleus and flux density enhancements to the South-West and North-East. The mean velocity map (Fig. 4b) shows that the ring is rotating, but with some distortions in the rotation pattern. The iso-velocity contours are tilted and the major axis position angle clearly changes moving from the edge to the center of the ring, indicating the possible presence of a warp and/or non-circular motions. The velocity dispersion map (Fig. 4c) shows CO line broadening on either side of the central hole, roughly consistent in position with the flux density enhancements. As discussed in Section 6.3, these features are suggestive of a physical interaction between the jets and the molecular gas disc. The integrated CO spectrum (Fig. 4d) exhibits the double-horned shape typical of a rotating disc, but with asymmetries reflecting those in the gas distribution.

Fig. 4a also shows the presence of two structures at  $\approx 1.3$  kpc west and  $\approx 2.3$  kpc east from the outer edges of the central ring, detected at  $7.5\sigma$  and  $14\sigma$ , respectively. Including these two structures, we estimate a total molecular gas mass of  $M_{\text{mol}} = 1.2 \times 10^8 M_{\odot}$ . The velocity field in Fig. 4b shows that the western and eastern regions have redshifted and blueshifted velocities, respectively, consistent with the nearest edges of the central ring but with different position angles. This leads us to speculate that they may trace the presence of a larger, warped molecular gas disc whose outer emission is below the detection threshold of our observations. Alternatively we may be seeing molecular clumps in a disc of atomic gas.

### NGC 3557 (PKS 1107-372)

NGC 3557 is a regular elliptical galaxy in a group (Govoni et al. 2000a). Its optical properties have been studied extensively (Colbert et al. 2001; Lauer et al. 2005; Capetti & Balmaverde 2005; Balmaverde & Capetti 2006). In particular, high-resolution HST observations clearly show the presence of a prominent dust ring in



**Figure 1.** Naturally weighted ALMA Band 6 (upper panels) and archival VLA (lower panels) continuum maps of each target. The reference frequency of each observation is indicated in the top-right corner of the panel. The wedge on the right of each map shows the colour scale in  $\text{Jy beam}^{-1}$ . Coordinates are given as relative positions with respect to the image phase centre in arcseconds; East is to the left and North to the top. The synthesised beam and the scale bar are shown in the bottom-left and bottom-right corner, respectively, of each panel. The properties of the ALMA continuum images are summarised in Table 3. Information about the archival radio images is provided in Appendix A.

the central regions (e.g. [Lauer et al. 2005](#), see also the right panel of Fig. 11).

NGC 3557 is the host galaxy of the double-sided radio source PKS 1107-372, which was first imaged by [Birkinshaw & Davies \(1985\)](#).

The continuum map of NGC 3557 (Fig. 1e, upper panel) shows emission from the core and a two-sided jet. The eastern and western jets extend  $\approx 900$  pc and  $\approx 1.2$  kpc, respectively, from the nucleus. The continuum emission detected at 230 GHz traces the inner part



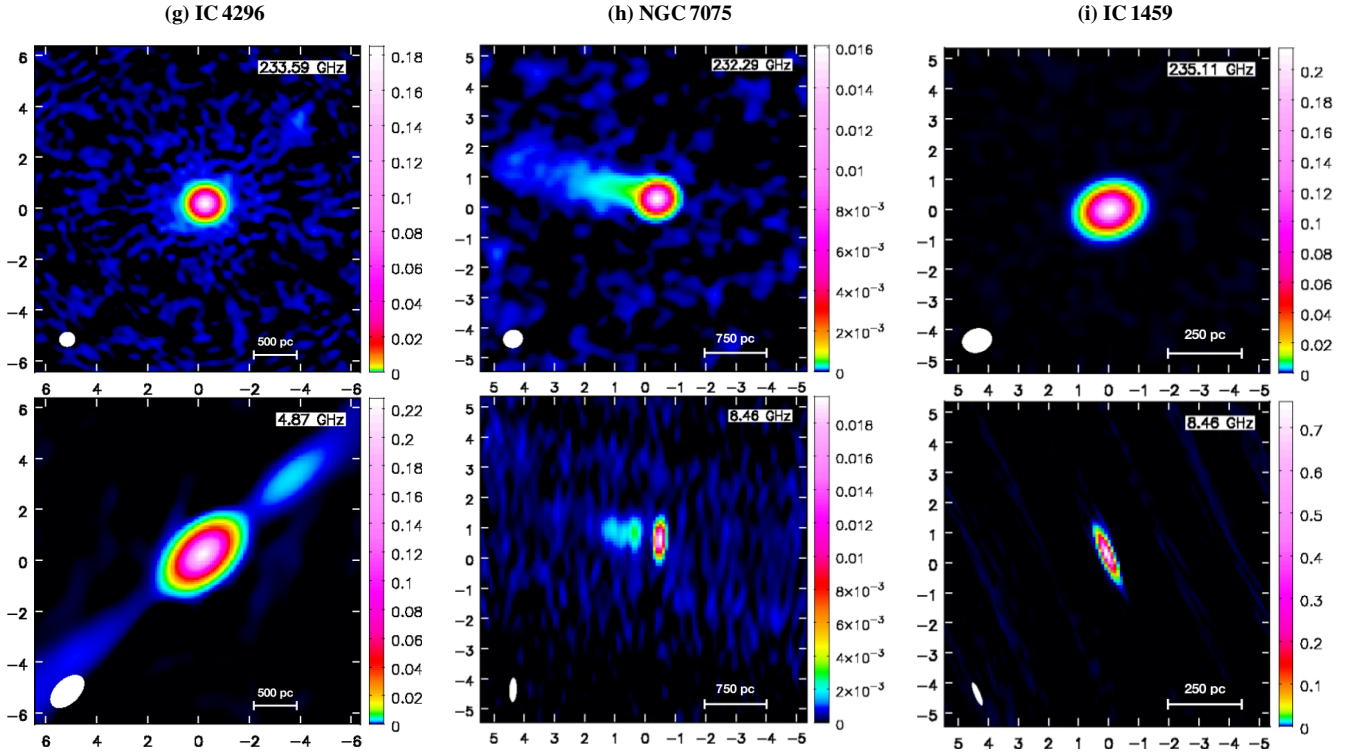


Figure 1. - continued.

of the radio structure visible on larger scales in the archival 4.9 GHz VLA map (Fig. 1e, lower panel).

We detect a CO disc (Fig. 5a) with  $M_{\text{mol}} = 6.2 \times 10^7 M_{\odot}$ . The disc is barely resolved in our observations, which have a beamwidth of 0.6 arcsec FWHM. The deconvolved major axis of the disc is  $\approx 300$  pc FWHM. The mean velocity map (Fig. 5b) shows that the gas is rotating regularly. This is also consistent with the symmetric double-horned shape of the integrated spectral profile (Fig. 5d). The velocity dispersion (Fig. 5c) decreases from  $\approx 100$  km s $^{-1}$  in the centre to  $\approx 20$  km s $^{-1}$  at the edges of the disc and shows a boxy profile; both features are likely to be due to beam smearing.

#### ESO 443-G 024 (PKS 1258-321)

ESO 443-G 024 is an elliptical galaxy in the cluster Abell 3537 (Govoni et al. 2000a). It is the host galaxy of the FRI radio source PKS 1258-321, characterised by a double-sided radio morphology (Fig. A2, upper panel).

The source is detected in the continuum, showing a bright nuclear component and also faint extended emission from a two-sided jet (Fig. 1f, top panel). The South-East and North-West jets extend  $\approx 900$  pc and  $\approx 1.6$  kpc, respectively, from the nucleus. The extended emission detected at 230 GHz matches that observed at lower sensitivity in the archival 15 GHz VLA map (Fig. 1f, bottom panel).

ESO 443-G 024 is undetected in CO with estimated  $M_{\text{mol}} < 3.5 \times 10^6 M_{\odot}$  assuming a point source, or  $\Sigma_{\text{CO}} < 3.9 \times 10^2 M_{\odot} \text{ pc}^2$  (Table 5).

#### IC 4296 (PKS 1333-33)

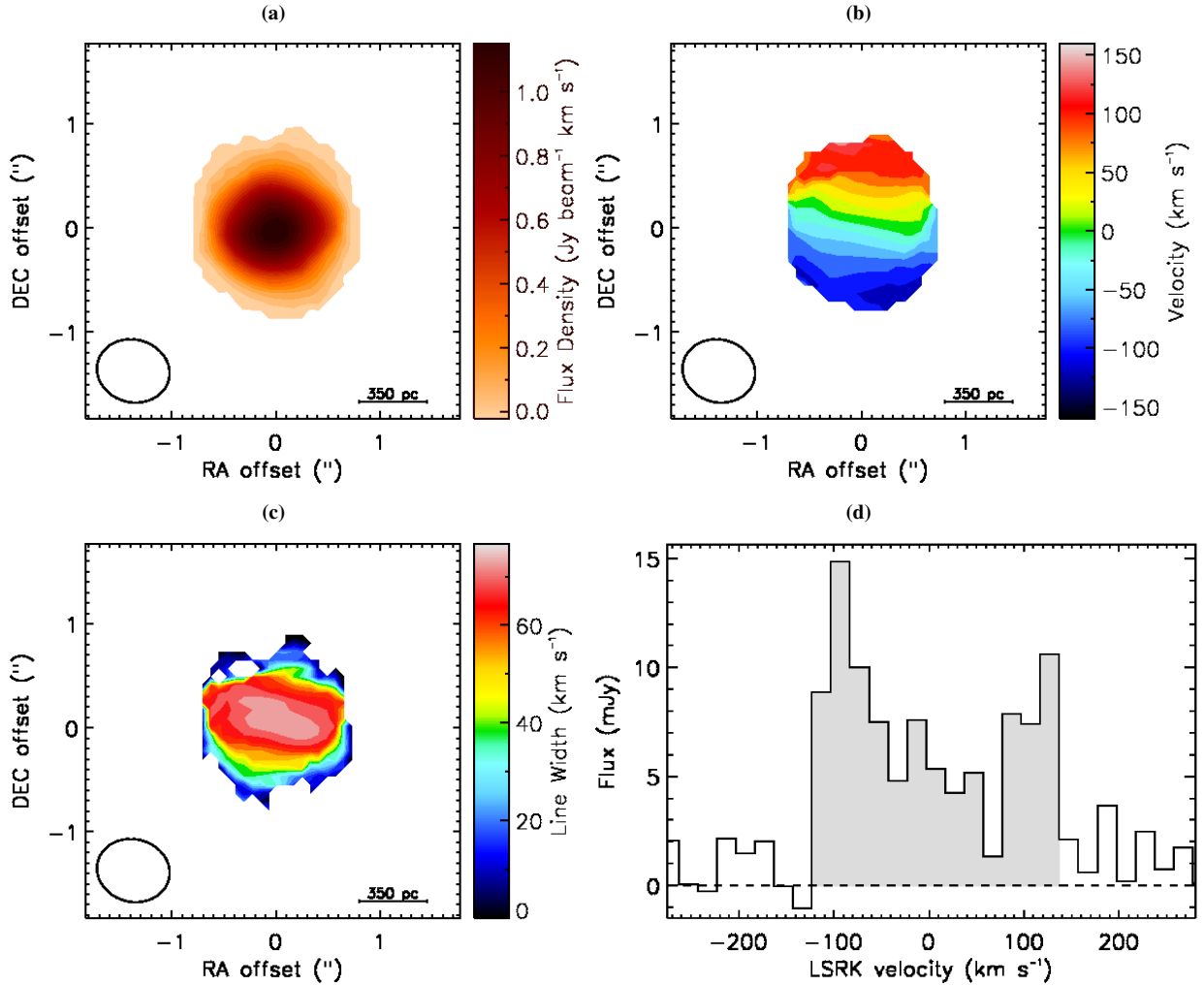
IC 4296 is an elliptical galaxy and is the brightest member of the group HCG 22 (Huchra & Geller 1982). HST observations reveal a prominent nuclear dust disc (Lauer et al. 2005).

IC 4296 hosts the FRI radio source PKS 1333-33. The core is marginally resolved on scales of few parsecs (Venturi et al. 2000). A large-scale, symmetric, double-sided jet extends up to 5 arcmin (77 kpc) from the nucleus, connecting with the outer lobes at 30 arcmin (Killeen et al. 1986; Burke-Spolaor et al. 2009). The inner jet structure of IC 4296 is discussed further in Appendix A (Fig. A3).

A bright continuum nuclear source is detected at 230 GHz (Fig. 1g, upper panel), with a major axis FWHM of 30 pc. The inner jets are undetected at 230 GHz, but faint ( $7\sigma$ ) emission is detected at a distance of about 950 pc North-West of the nucleus, coincident with the brighter knot of the North-West jet visible in the archival 4.9 GHz VLA map (Fig. 1g, bottom panel).

We detect CO(2-1) emission with an estimated molecular gas mass of  $2.0 \times 10^7 M_{\odot}$ . The CO integrated intensity map (Fig. 6a) shows a disc with a somewhat asymmetric morphology. The velocity field (Fig. 6b) shows an s-shaped zero-velocity contour, suggesting the presence of a warp in the disc, although better resolution observations are necessary to confirm this hypothesis. The moment 2 map (Fig. 6c) is likely to be dominated by beam smearing. The integrated spectral profile (Fig. 6d) reveals the presence of a strong absorption feature that is discussed in more detail in Section 6.2.

Boizelle et al. (2017) presented Cycle 2 ALMA observations of IC 4296 in the same CO transition. They reported a  $5\sigma$  CO(2-1) detection with an integrated flux of  $0.76 \text{ Jy km s}^{-1}$ , about a factor of two lower than that measured in this work. However, their CO(2-1) observation is a factor of two noisier than that presented in this paper (for the same channel width) and this may have caused them to miss some of the emission. We also note that they used different



**Figure 2.** IC 1531 moment 0 (2a), moment 1 (2b) and moment 2 (2c) maps created with the masked moment technique described in Section 4 using a data cube with a channel width of  $20 \text{ km s}^{-1}$ . The synthesised beam is shown in the bottom-left corner of each panel. The wedges to the right show the colour scale. In each panel, East is to the left and North to the top. The integrated spectral profile in panel 2d was extracted within a box of  $1.6 \times 1.6 \text{ arcsec}^2$ , including all the CO emission. The spectral channels that are used to estimate the FWZI are highlighted in grey. The black dashed horizontal line indicates the zero flux level. In panels b – d, velocities are measured in the source frame and the zero-point corresponds to the intensity-weighted centroid of the CO emission, equivalent to  $v_{\text{CO}}$  in the LSRK frame (Table 5).

$R_{21}$  and  $X_{\text{CO}}$  values. Their mass estimate is therefore a factor of three lower than ours. The integrated spectral profile of IC 4296 presented in Boizelle et al. (2017) is qualitatively similar to ours, with a line width of  $\approx \pm 480 \text{ km s}^{-1}$ .

### NGC 7075 (PKS 2128-388)

NGC 7075 is an elliptical galaxy with an optically unresolved component in the core (Govoni et al. 2000b). It is the host galaxy of the FR I radio source PKS 2128-388: a low-resolution 4.9 GHz VLA map of NGC 7075 showing its large-scale radio structure is presented in Appendix A (Fig. A2, lower panel).

A nuclear source is detected in our 230 GHz continuum map (Fig. 1h, upper panel), with a major axis FWHM of 40 pc. Faint emission from the eastern jet is also detected, extending to  $\approx 1.9 \text{ kpc}$  from the nucleus; the western (counter-) jet is undetected. The eastern jet is also visible in the archival 8.5 GHz VLA map (Fig. 1h, lower panel).

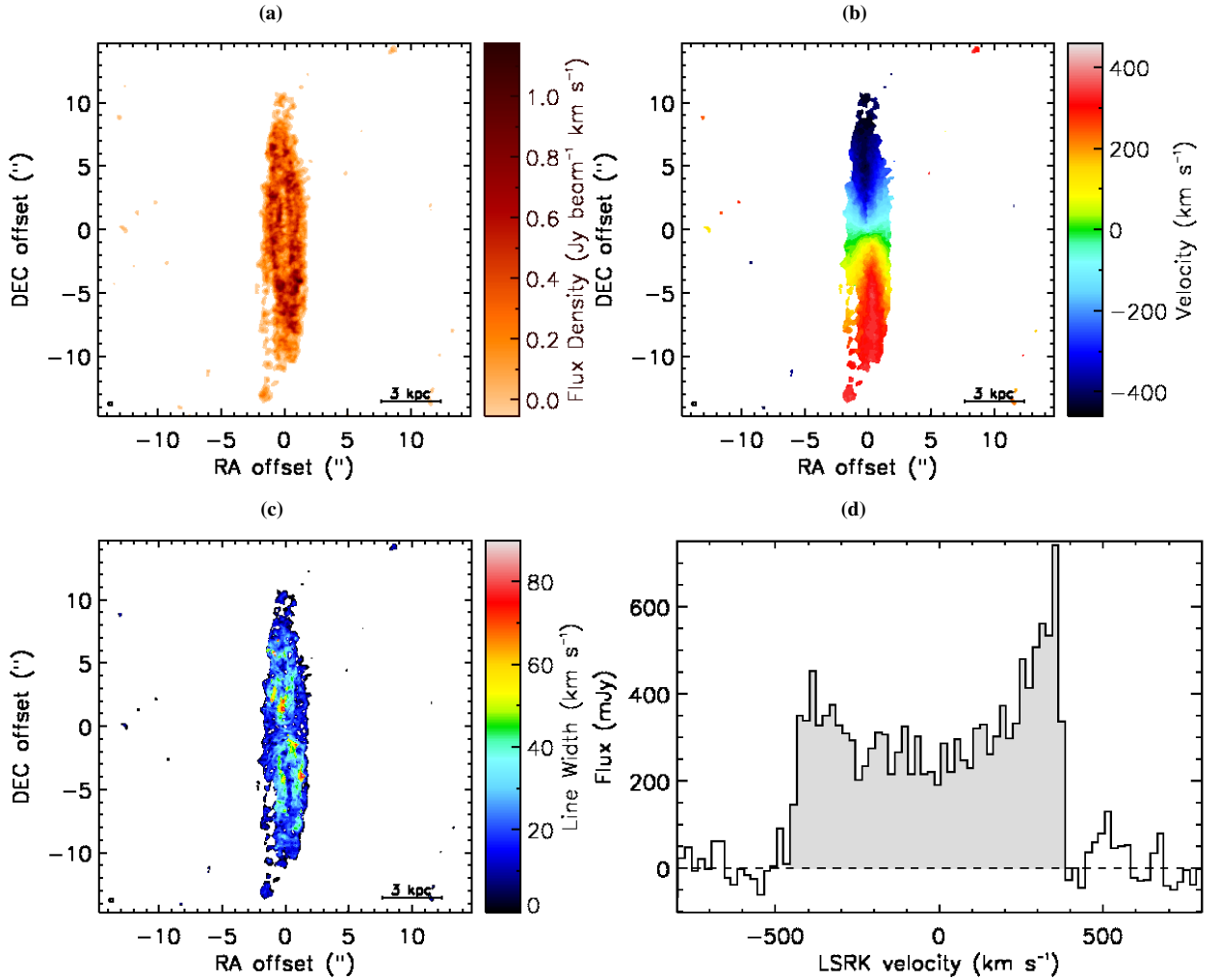
We detect a barely resolved CO(2-1) disc (Fig. 7a), with an

estimated molecular gas mass of  $2.9 \times 10^7 M_{\odot}$ . The mean velocity map (Fig. 7b) shows regular gas rotation. The line width (Fig. 7c) is likely to be dominated by beam-smear rotation.

### IC 1459 (PKS 2254-367)

IC 1459 is an elliptical galaxy in a poor group of spiral galaxies. A faint dust lane is detected in the HST image of IC 1459, mostly visible towards the galaxy outskirts; its morphology is interpreted as a transitional stage between a patchy chaotic structure and a nuclear ring (Sparks et al. 1985; Lauer et al. 2005). IC 1459 also contains one of the most prominent counter-rotating cores observed in an elliptical galaxy (Verdoes Kleijn et al. 2000; Cappellari et al. 2002; Ricci et al. 2015), probably the result of a major merger between gas-rich spiral galaxies (e.g. Hernquist & Barnes 1991).

IC 1459 is the host galaxy of the radio source PKS 2254-367, which was classified by Tingay et al. (2003) as a compact (arcsec-scale), GHz-peaked radio source (GPS) in a high-density environment.



**Figure 3.** NGC 612 moment maps and spectral profile as in Fig. 2, created using a data cube with a channel width of  $20 \text{ km s}^{-1}$ . The integrated CO spectral profile was extracted within a box of  $4 \times 20 \text{ arcsec}^2$ .

We detect continuum emission from a bright nuclear source (Fig. 1i, upper panel) with an estimated major axis FWHM of  $10 \text{ pc}$ . This marginally resolved continuum emission matches that visible in the archival  $8.5 \text{ GHz}$  VLA map (Fig. 1i, lower panel). The angular resolution ( $0.9''$ ) of our observations does not allow us to resolve the pc-scale double-sided radio source detected with Very-Long Baseline Interferometry by Tingay & Edwards (2015).

Surprisingly, IC 1459 is undetected in CO with ALMA, with estimated  $M_{\text{mol}} < 1.0 \times 10^6 M_{\odot}$  assuming a point source, or  $\Sigma_{\text{CO}} < 7.6 \times 10^2 M_{\odot} \text{ pc}^2$  (Table 5).

## 6 DISCUSSION

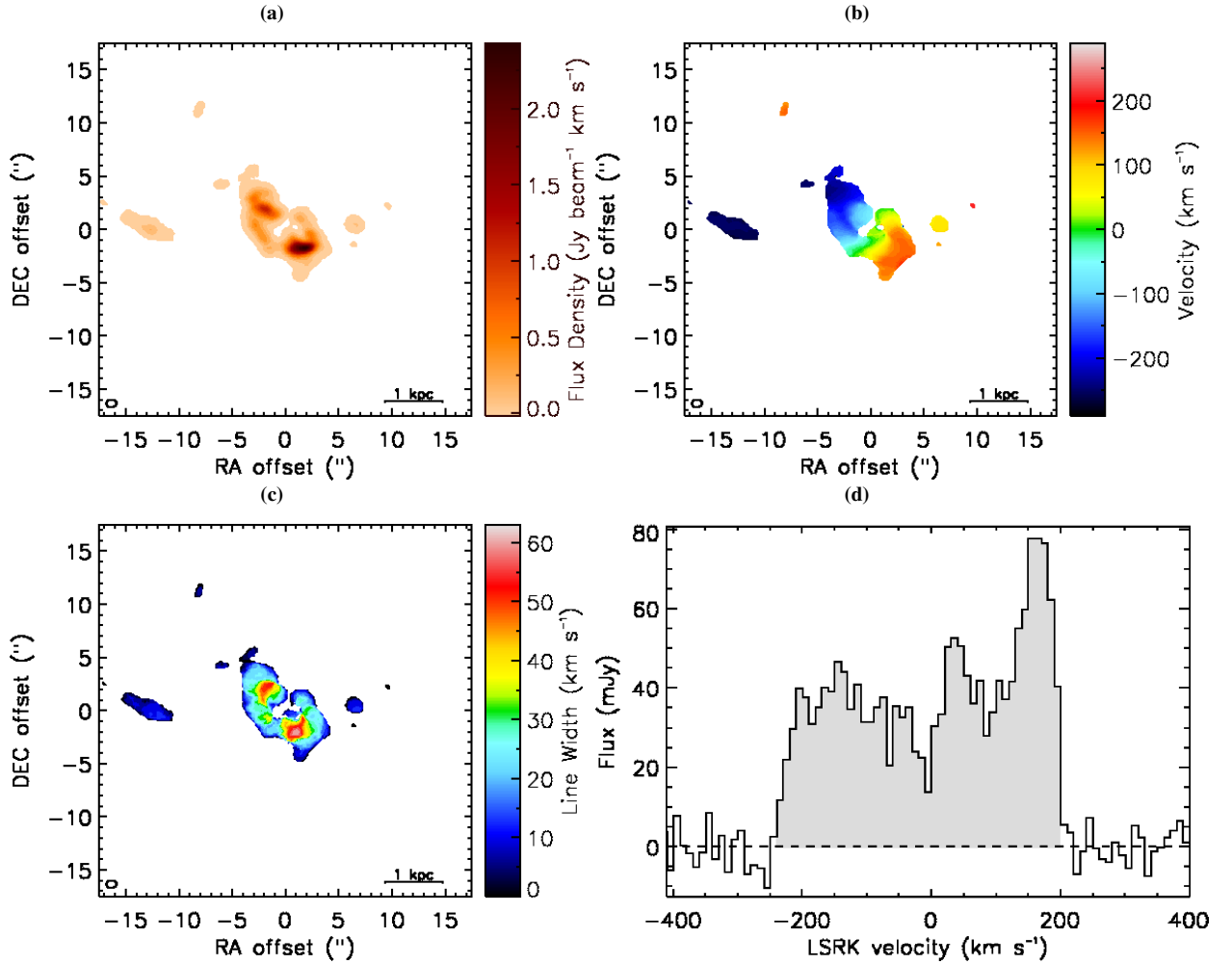
### 6.1 Origin of the 230 GHz continuum emission

The continuum emission at  $230 \text{ GHz}$  is morphologically very similar to the emission observed at frequencies between  $4.9$  and  $15 \text{ GHz}$  in the archival VLA images (Fig. 1). It is likely to be dominated by radio synchrotron emission from the core and jet structures. There is no evidence of thermal emission associated with extended dust or CO, although we cannot rule out the possibility of some contribution to the unresolved core emission from this mechanism.

For two sources, NGC 3100 and NGC 3557, the available VLA

archive data at  $4.9\text{-GHz}$  (Fig. 1d and 1e, bottom panels) are sufficiently well matched to the ALMA data in resolution (see Tables 2 and A1) and uv coverage to enable us to derive spectral-index maps. The ALMA and VLA input maps were first re-imaged using the `CASA CLEAN` task in multi-frequency synthesis (MFS) mode (`nterms=1`) with the same uv ranges and natural weighting. The maps were restored with the same synthesized beam and spectral index maps were then produced using the `CASA` task `IMMATH`. The results are shown in Fig. 8. As expected, the radio cores show flat spectra ( $-0.2 < \alpha < 0.2$ , for  $S \propto \nu^{\alpha}$ ), while the jet spectra are steeper ( $\alpha \approx -0.7$ ). This is consistent with synchrotron emission, partially optically thick (self-absorbed) in the core and optically thin in the jets. The jet spectral indices are slightly steeper than those typically seen between  $1.4$  and  $4.9 \text{ GHz}$  in FRI jets ( $\alpha \approx -0.6$ ; Laing & Bridle 2013), but there is no sign of abrupt high-frequency steepening due to synchrotron or inverse Compton losses.

We also estimated the spectral indices of the radio cores of all the sources using the core flux densities determined from the ALMA  $230 \text{ GHz}$  and archival VLA continuum maps shown in Fig. 1. The VLA maps were chosen to match the ALMA images as closely as possible in resolution (Table A1), but we note that for NGC 612 the only available VLA map has much lower resolution. The estimated core spectral indices are listed in Table 6. All of the spectra are



**Figure 4.** NGC 3100 moment maps and spectral profile as in Fig. 2, created using a data cube with a channel width of  $10 \text{ km s}^{-1}$ . The integrated CO spectral profile was extracted from the data cube within a  $8.6 \times 10 \text{ arcsec}^2$  box.

**Table 6.** Core spectral index.

Target	$\alpha_{\text{core}}$	$\nu_{\text{VLA}}$ (GHz)
(1)	(2)	(3)
IC 1531	0.17	8.5
NGC 612	0.10	4.9
PKS 0718-34	0.12	8.5
NGC 3100	-0.2	4.9
NGC 3557	0.2	4.9
ESO 443-G 024	0.25	14.9
IC 4296	0.05	4.9
NGC 7075	-0.43	8.5
IC 1459	-0.40	8.5

*Notes.* – Columns: (1) Target name. (2) Core spectral index between 230 GHz and  $\nu_{\text{VLA}}$ . (3) Frequency of the VLA radio map.

flat, as expected for partially optically thick synchrotron emission from the inner jets, except for NGC 7075 and IC 1459. The latter has a sub-arcsecond FR I radio structure which is unresolved in our observations (Tingay & Edwards 2015), so we expect the emission to be dominated by an optically-thin component.

## 6.2 CO absorption

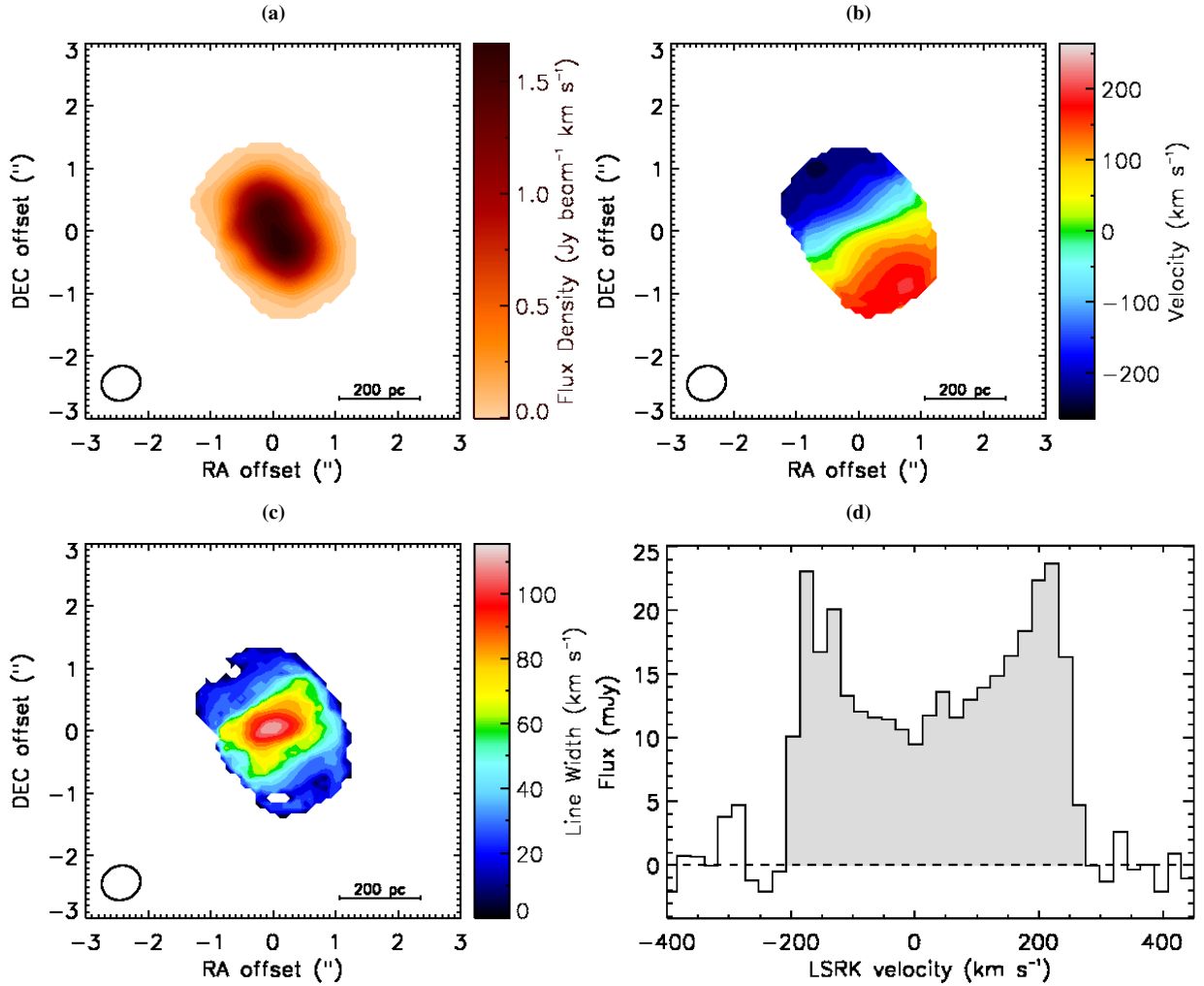
### 6.2.1 Search for absorption

We searched for absorption features in all the galaxies detected in CO by extracting integrated spectra in small boxes around the bright nuclear continuum sources. The integrated spectrum of IC 4296 shows a deep and narrow absorption feature (already clear in Fig. 6d). This is discussed in detail below (Section 6.2.2). No significant absorption features were found in any of the other sources. In particular, we do not detect CO absorption against the nucleus of NGC 612, where Morganti et al. (2001) found absorption in HI.

### 6.2.2 Absorption in IC 4296

In order to investigate the absorption feature in IC 4296 in more detail, we re-imaged the visibility data into a cube with a channel width of  $3 \text{ km s}^{-1}$  (i.e. approximately twice the raw channel width). We then extracted the CO spectrum from a  $0.4 \times 0.4 \text{ arcsec}^2$  ( $\approx 100 \times 100 \text{ pc}$ ) box, centred on the 230 GHz core continuum emission. The resulting spectrum is shown in Figure 9. The absorption peak is at  $3720 \pm 3 \text{ km s}^{-1}$ , consistent within the errors with the most accurate determination of the optical systemic velocity ( $3737 \pm 10 \text{ km s}^{-1}$ ; see Table 1). The maximum absorption depth measured from this





**Figure 5.** NGC 3557 moment maps and spectral profile as in Fig. 2, created using a data cube with a channel width of  $22 \text{ km s}^{-1}$ . The integrated CO spectral profile was extracted within a  $3.0 \times 3.0 \text{ arcsec}^2$  box.

spectrum is  $-20.2 \text{ mJy}$  and the FWHM is  $\approx 9 \text{ km s}^{-1}$ , resulting in an integrated absorption flux of  $\approx 0.14 \text{ Jy km s}^{-1}$ . Morganti et al. (2001) presented a  $3\sigma$  upper limit of  $\tau < 0.041$  for the optical depth of the HI absorption in IC 4296. Following Morganti et al. (2001), we measured the peak optical depth,  $\tau$ , using the core flux density derived from the continuum image (Table 3): the resulting optical depth is  $\tau \approx 0.12$ . If we assume an HI spin temperature of  $100 \text{ K}$  (e.g. Morganti et al. 2001), a CO excitation temperature of  $10 \text{ K}$  (e.g. Heyer et al. 2009), and an HI to  $\text{H}_2$  column density ratio of  $\sim 10^{-2}$ , as estimated from HI and CO absorption in the radio emitting LINER PKS B1718–649 (Maccagni et al. 2014, 2018), we estimate an HI optical depth of  $\tau \approx 1.2 \times 10^{-4}$ , well below the upper limit calculated by Morganti et al. (2001).

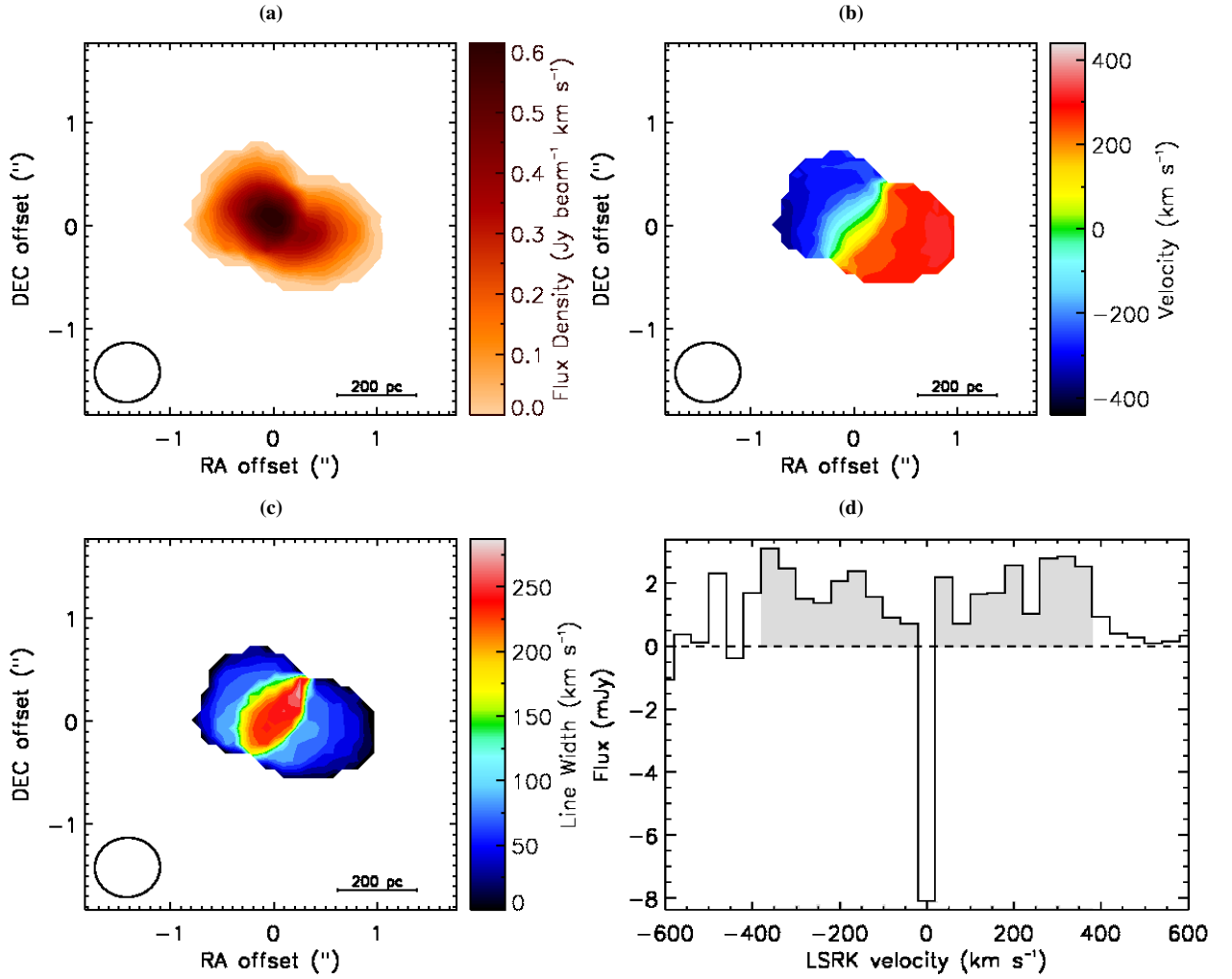
The spectral profile in Figure 9 also exhibits fainter absorption features on either side of the peak (broader at blueshifted velocities). Similar structures are visible in the integrated spectrum of IC 4296 presented by Boizelle et al. (2017) with comparable channel width and extraction region. The observed asymmetric features may be a signature of the disc warping inferred on larger scales from the velocity field of CO in emission (see Section 5). Alternatively, they may be interpreted as an indication of the presence of non-circular motions in the central  $100 \text{ pc}$  of the CO disc. Higher-

resolution observations are needed to differentiate between these two scenarios.

### 6.3 Jets and molecular gas

Figure 10 shows the mean CO(2-1) velocity maps for the detected galaxies with the corresponding  $230 \text{ GHz}$  continuum contours superimposed. For those sources in which emission from the resolved jets was not detected at  $230 \text{ GHz}$ , we added dashed arrows to indicate the jet axes as determined from archival VLA data. The position angles of the jet axis and the CO disc major axis are listed in Table 7. Following De Koff et al. (2000) and De Ruiter et al. (2002), we estimated the alignment angles as  $|\Delta PA| = |PA_{\text{CO}} - PA_{\text{jet}}|$  ranged in  $0-90^\circ$ . This is a measure of the relative orientation of CO discs and jets, at least in projection. A more comprehensive analysis would require 3D modelling of both the radio jets and the molecular gas disc, in order to estimate their inclinations with respect to the plane of the sky and hence their true (mis-)alignments.

It is clear from our analysis that the jet/disc relative orientations span a wide range. In four of the six detected galaxies ( $67 \pm 33\%$ ) we measure large misalignments ( $|\Delta PA| \geq 60^\circ$ ), meaning that the gas discs are roughly orthogonal to the jets in projection (i.e. the rotation axes of the gas and the jets appear almost parallel);



**Figure 6.** IC 4296 moment maps and spectral profile as in Fig. 2, created using a data cube with a channel width of  $40 \text{ km s}^{-1}$ . The integrated CO spectral profile was extracted within a  $2 \times 1.5 \text{ arcsec}^2$  box.

two sources ( $33 \pm 24\%$ ), however, show smaller alignment angles ( $|\Delta PA| < 60^\circ$ ), suggesting a significant misalignment between the jet and the disc rotation axes, at least in projection. These results are statistically consistent with earlier findings based on the analysis of jets and dust lanes, although a larger sample is obviously needed to draw significant conclusions about the form of the misalignment distribution, for example bimodality (see Section 6.5 for a more detailed discussion).

NGC 3100 is a special case. While the jet and disc rotation axes appear almost aligned in projection, there are indications of a possible interaction between the gas and the jets. The ring-like CO distribution shows a clear discontinuity to the North of the nucleus, in the direction of the northern jet (Fig. 10c). Enhancements of both line brightness and width are visible adjacent to the jet (Figs 4a and 4c), as well as distortions in the rotation pattern (Fig. 4b), that may hint at warps and/or non circular motions. We also note that the VIMOS IFU [OIII] $\lambda 5007$  map of NGC 3100 shows clear equivalent width broadening (by a factor of 2) at the positions of the peaks of both radio jets (Warren et al., in preparation), reinforcing the case for a jet/gas interaction.

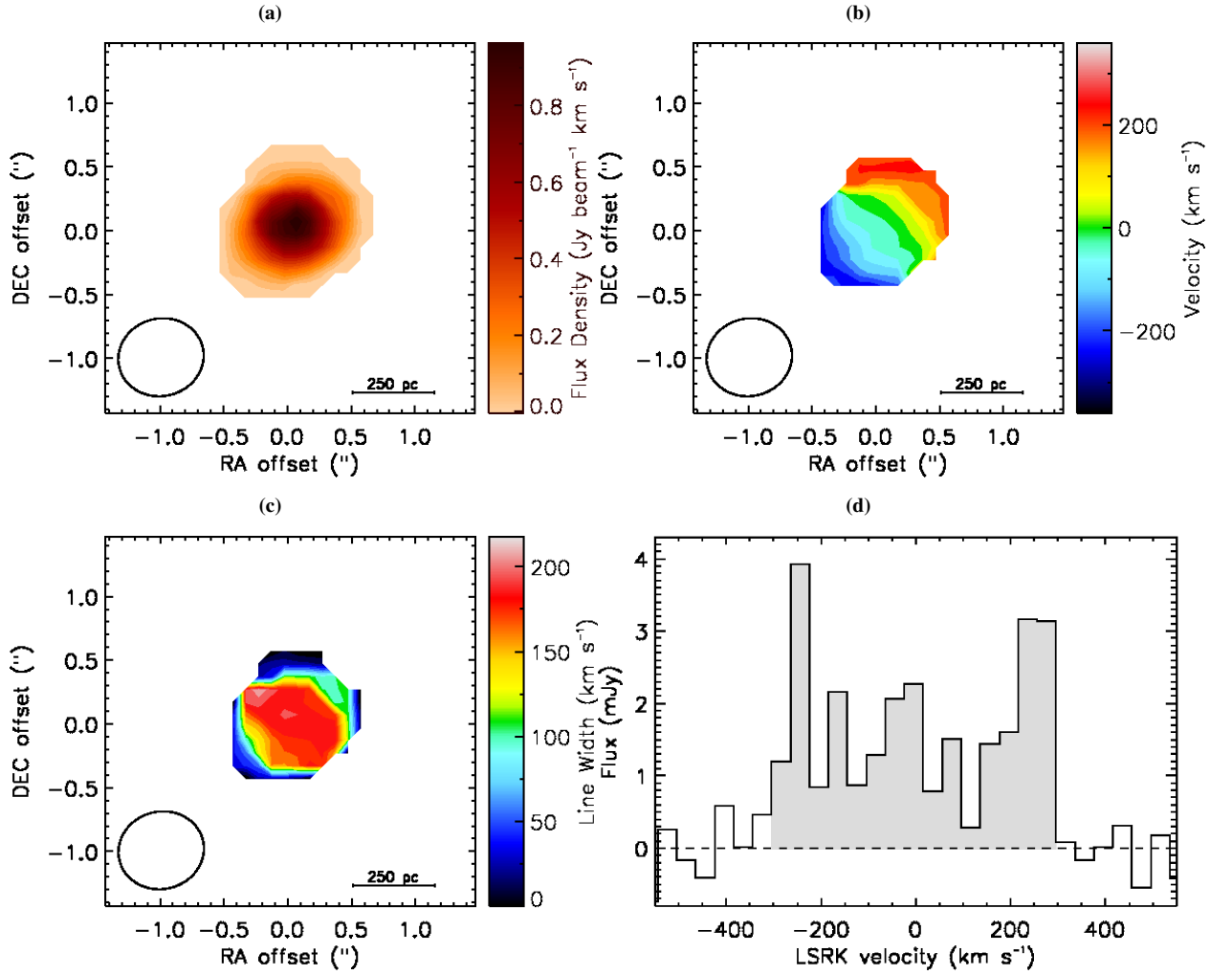
**Table 7.** Alignment between jets and CO discs

Target	$PA_{\text{CO}}$ (deg)	$PA_{\text{jet}}$ (deg)	$ \Delta PA $ (deg)
(1)	(2)	(3)	(4)
IC 1531	176	158	18
NGC 612	4	97	87
NGC 3100	48	165	63
NGC 3557	31	77	46
IC 4296	57	131	74
NGC 7075	130	68	62

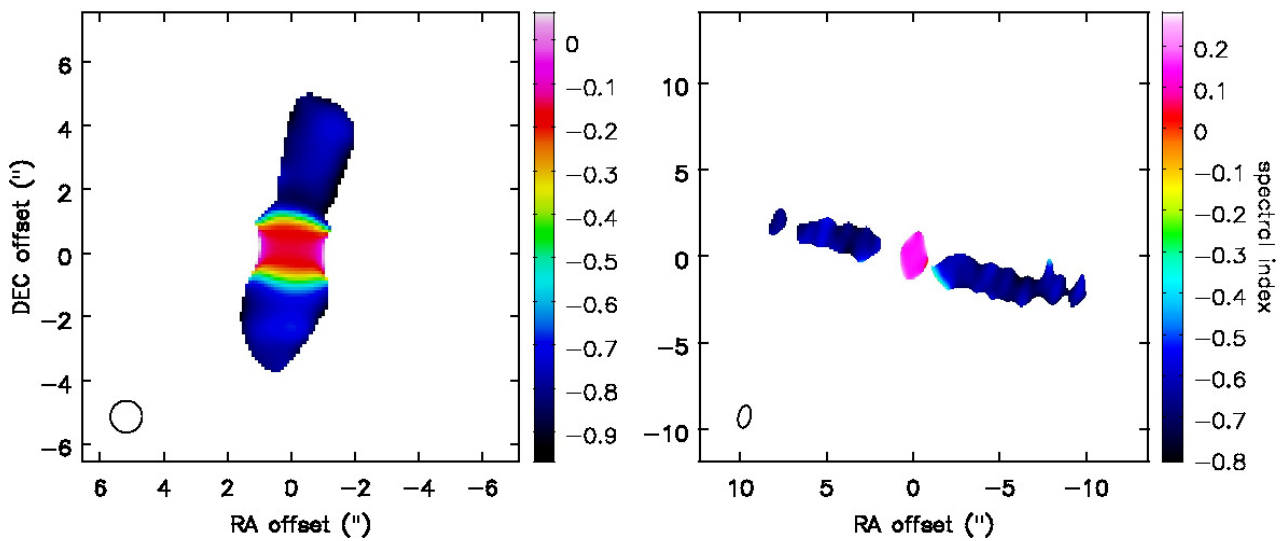
*Notes.* – Columns: (1) Target name. (2) Kinematic position angle of the CO disc measured counterclockwise from North to the approaching side of the velocity field. (3) Position angle of the jet axis (from North through East) derived from the 230 GHz continuum images (see also Table 3) or the archival radio images presented in this work. (4) Alignment angles between the jet axes and CO discs,  $|\Delta PA| = |PA_{\text{CO}} - PA_{\text{jet}}|$  ranged in  $0 - 90^\circ$ .

#### 6.4 Comparison of CO and dust distributions

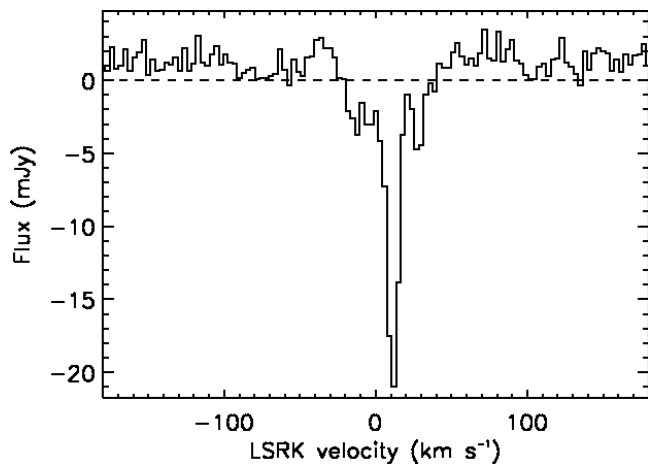
It is expected that dust obscuration and line emission from cold molecular gas will trace the same component of the interstellar medium of ETGs. The association between the presence of nuclear



**Figure 7.** NGC 7075 moment maps and spectral profile as in Fig. 2, created using a data cube with a channel width of  $40 \text{ km s}^{-1}$ . The integrated CO spectral profile was extracted within a box of  $1 \times 1 \text{ arcsec}^2$ .



**Figure 8.** Spectral index maps of NGC 3100 (left panel) and NGC 3557 (right panel), obtained from our ALMA 230 GHz and archival VLA 4.9 GHz maps. The wedge on the right of each map indicates the colour scale. Coordinates are reported as relative position with respect to the image phase centre, in arcsec; East is to the left and North to the top.



**Figure 9.** CO spectral profile of IC 4296 extracted within a  $0.4 \times 0.4$  arcsec<sup>2</sup> box around the core. The spectrum has a channel width of  $3 \text{ km s}^{-1}$ . The black dashed horizontal line indicates the zero flux level. Some unresolved CO emission is visible above the zero flux level. The line absorption feature has a FWHM of  $9 \text{ km s}^{-1}$ , with an absorption peak of  $\approx -20.2 \text{ mJy}$ .

dust discs and double-horned CO line profiles is well established (Prandoni et al. 2007, 2010; Young et al. 2011) and the imaging observations of Alatalo et al. (2013) demonstrated a clear morphological correspondence. This co-spatiality seems also to be confirmed for the four of our CO detected sources for which optical imaging is available (see Sections A2 and A3 for details), although higher resolution observations would be needed in some cases to draw strong conclusions.

Figure 11 shows archival HST images of IC 4296 and NGC 3557, with the CO moment 0 contours overlaid. In both cases, the dust and molecular gas are clearly co-spatial. The distorted CO morphology of IC 4296 accurately follows that of the dust (Fig. 11a), supporting the hypothesis of a warp as suggested by the CO velocity field (Fig. 6b). The CO distribution in NGC 3557 appears to be settled in a regular disc, whereas the dust shows a well-defined ring-like structure (Fig. 11b). In this case, it is possible that the CO distribution would be resolved into a ring by observations with FWHM  $\lesssim 0.3$  arcsec,

Figure 12a shows the CO moment 0 contours of NGC 3100 overlaid on a B–I dust absorption map (see Section A3, for details). The CO ring of NGC 3100 appears to be co-spatial with a nuclear dust ring, while the outer structure detected to the East seems to trace a diffuse dust patch on larger scales. Additional dust is visible beyond the detected CO emission, possibly indicating the presence of a larger CO distribution which could be below the detection threshold or beyond the FOV of our observations ( $\approx 26''$ ).

Figure 12b shows the CO moment 0 contours of NGC 612 overlaid on an archival photographic B band optical image; a B–I dust absorption map is shown in the bottom right corner (see Section A3 for details). The CO disc seems to be located slightly eastward of and skewed with respect to the dominant dust lane visible in the B band image. The B–I colour map shows the presence of an inner dust lane, which may be co-spatial with the CO disc, although there is still a slight apparent difference in position angle on the sky. Given the low spatial resolution of the B-band image and the absence of absolute astrometry for the colour map, the connection between CO and dust in this object is not clear: higher-resolution optical observations are needed.

## 6.5 Dust and molecular gas in radio galaxies

There is evidence that radio galaxies contain significantly more cold gas and dust than radio-quiet ETG’s. A correlation between dust mass and radio power was found by De Ruiter et al. (2002). LERGs with  $1.4 \text{ GHz}$  radio luminosities  $P_{1.4} \gtrsim 10^{22} \text{ W Hz}^{-1}$  also contain significantly larger masses of cold molecular gas than radio-weak or radio-silent ETGs (Paper II), but the dependence of dust and gas mass on  $P_{1.4}$  does not appear to extend to lower radio luminosities (Paper II; Baldi et al. 2015).

De Koff et al. (2000) found the dust properties of radio galaxies to be strongly correlated with FR classification, in the sense that FR II sources have larger masses of dust in chaotic distributions, whereas FR I’s tend to have smaller masses of dust in kpc-scale discs. Similar results were subsequently found by De Ruiter et al. (2002). Given the almost one-to-one correspondence between FR class and emission-line classification for those particular samples (FR I = LERG; FR II = HERG), the results are equally consistent with a fundamental relation between optical spectral type (or accretion rate) and dust mass, in the sense that HERGs have more dust than LERGs. This has a natural explanation in the framework of recent ideas on the fuelling of the two classes of radio galaxy (Heckman & Best 2014) and therefore seems physically more plausible than a direct relation between dust mass and FR class.

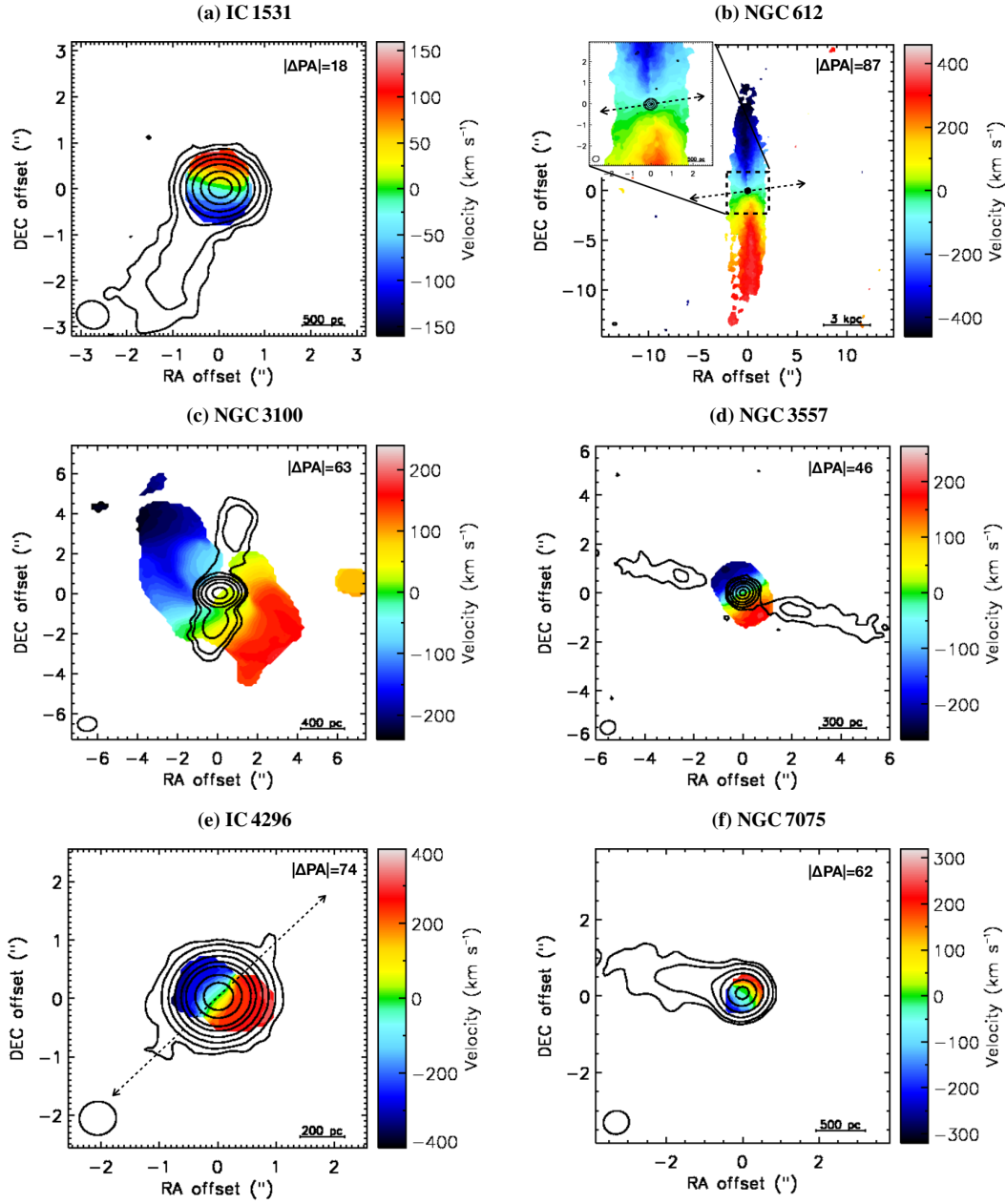
Our results are consistent with the observation that dust in LERGs is most usually in disc-like distributions (De Koff et al. 2000; De Ruiter et al. 2002). To a good first approximation, our CO detections show disc or ring-like structures on kpc or sub-kpc scales (NGC 612 is significantly larger). It therefore seems likely that the gas and dust are mostly in regular orbits, with NGC 612, NGC 3100 and IC 4296 perhaps still being in the process of settling, as in the episodic model described by Lauer et al. (2005).

Kotanyi & Ekers (1979) first suggested that dust discs and jets tend to be orthogonal and De Koff et al. (2000) supported this result, albeit with clear outliers (see also Van Dokkum & Franx 1995). De Ruiter et al. (2002) found that 79% of the radio galaxies in their sample (mostly LERGs) have alignment angles  $\geq 60^\circ$ , further supporting this scenario. Schmitt et al. (2002) found less tendency to orthogonality and Verdoes Kleijn & de Zeeuw (2005) suggested that orthogonality is restricted to galaxies with irregular dust lanes (as opposed to more regular, disc-like distributions like those found in our sample). Although the small sample size does not allow us to draw strong conclusions, our results on CO/jet (mis-)alignments are statistically consistent with previous studies: in four cases the gas discs are roughly orthogonal to the jets in projection; in two objects there are gross misalignments.

Simulations of jet formation by black holes accreting at  $\ll 0.01 \dot{M}_{\text{Edd}}$ , as inferred for LERGs, confirm that jets are launched along the spin axes of the holes and their inner accretion discs, primarily powered by electromagnetic energy extraction (Blandford & Znajek 1977; McKinney et al. 2012). For a simple axisymmetric system we might expect a common rotation axis for the black hole, inner accretion disc and kpc-scale molecular disc. In this case, the jets and molecular discs should be accurately orthogonal. This is clearly not always true, and models in which the jets can be misaligned with respect to the rotation axis of either the accretion disc or the larger-scale dust/molecular gas disc have therefore been discussed extensively in the literature (e.g. Kinney et al. 2000; Schmitt et al. 2001, 2002; Verdoes Kleijn & de Zeeuw 2005; Gallimore et al. 2006; King & Nixon 2018).

One possibility is that the molecular gas results from a minor merger or interaction and has not yet settled into a principal plane





**Figure 10.** Mean velocity (moment 1) maps of the six  $^{12}\text{CO}(2-1)$  detections, with 230 GHz continuum contours superimposed. Contours are drawn at 1,3,9...times the  $3\sigma$  rms noise level. The wedge on the right shows the colour scale of the CO velocity maps. The beam and the physical scale bars are drawn in the bottom-left and bottom-right corner of each panel, respectively. Black dashed arrows indicating the jet axes are also included in panels b and e. The alignment angle between the jet axis and the CO disc,  $|\Delta PA|$ , is given in the top-right corner of each panel (see the text for details).

of the host galaxy potential (e.g. Lauer et al. 2005; Shabala et al. 2012; Van de Voort et al. 2015, 2018). In this case, there is no reason for the angular momentum vector of the gas to be aligned with that of the central black hole. Schmitt et al. (2002) and Verdoes Kleijn & de Zeeuw (2005) argue against this idea on the grounds that regular dust discs appear to rotate around the short axes of oblate-triaxial gravitational potentials and have therefore settled. Both of the galaxies in our sample with extreme disc-jet misalignments (IC 1531 and NGC 3557) show regular disc rotation (at the resolution of our ALMA observations) and the gas and stars rotate together (see below). At least in these two cases, the gas is likely to have settled. Gas in younger (and therefore smaller) radio galaxies

might be more likely to be in the settling phase, but the majority of our sample (including the two very misaligned cases) are mature radio galaxies with large-scale jets. Furthermore, the spectral ages and alignment angles for the B2 radio-galaxy sample (mostly LERGs; Colla et al. 1975) are not correlated (Parma et al. 1999; De Ruiter et al. 2002). A misaligned inflow of molecular gas therefore seems not to explain all of the observations, although it may be relevant for some objects.

The misalignment might instead occur between the inner edge of the molecular disc and the jet formation scale. One obvious possibility is that the jet is launched along the spin axis of the black hole, which in turn is determined by earlier merger events

and is not aligned with an axis of the stellar gravitational potential. Alternatively, if the jet direction is defined by the inner accretion disc, then warping of the disc may cause misalignment (Schmitt et al. 2002). The inner part of a tilted thin accretion disc is expected to become aligned with the black hole mid-plane via the Bardeen-Petterson effect (Bardeen & Petterson 1975), although the hole spin eventually becomes parallel to the angular momentum vector of the accreted matter (Rees 1978; Scheuer & Feiler 1996). Simulations by Liska et al. (2018) show that jets are launched along the angular momentum vector of the outer tilted disc in this case. It is not clear whether this mechanism can work for the thick accretion discs thought to occur in LERGs, however (Zhuravlev et al. 2014).

As emphasised by Schmitt et al. (2002), projection effects significantly affect the observed distribution of misalignment angles, so we plan to investigate this issue further only after performing 3D modelling of both discs and jets.

The emerging picture from observations of CO emission and dust is that LERGs contain substantial masses of molecular gas, always associated with dust, but often in stable orbits. The low accretion rate in LERGs need not be determined by a complete absence of cold molecular fuel, but rather by a low infall rate from a substantial gas reservoir. A possible implication is that a perturbation of the gas could rapidly increase the accretion rate and convert the galaxy to a HERG, even without further gas supply from (e.g.) major mergers.

The origin of the cold gas is an open question: it can either be internal (stellar mass loss, cooling from the hot gas phase) or external (minor/major merger, interaction, accretion). Observationally, galaxies in poor environments or in the field appear to accrete their ISM reservoirs from external sources (e.g. Young 2005; Davis et al. 2011, 2015). Ocaña Flaquer et al. (2010) found no correlation between the optical luminosity and the molecular gas mass of their sample of radio galaxies, so they favoured an external origin for the molecular gas, probably from minor mergers. Davis et al. (2011) used the criterion of misalignment (by at least  $30^\circ$ ) between the gaseous and stellar kinematic major axes to establish the origin of the gas. Using this method, they favoured an external origin for at least 15/40 (38%) of the radio-quiet ETGs imaged in CO with CARMA. This criterion implies an external origin for at least two of our radio galaxies, NGC 3100 and NGC 7075, where a direct comparison with VIMOS IFU spectroscopy (Warren et al., in preparation) reveals a strong kinematic misalignment between the CO and the stellar components ( $\sim 120^\circ$ ) in both cases. In the remaining four galaxies the CO and stellar rotation axes are aligned: this is consistent either with an internal origin or with the gas having settled into stable orbits in the gravitational potential. Patchy or distorted dust morphologies are usually indicative of recent disturbances, such as interactions or merger events (Lauer et al. 2005; Alatalo et al. 2013), but the situation is complicated by potential interactions between gas and radio jets: indeed, both processes may be at work in NGC 3100.

## 7 SUMMARY AND CONCLUSIONS

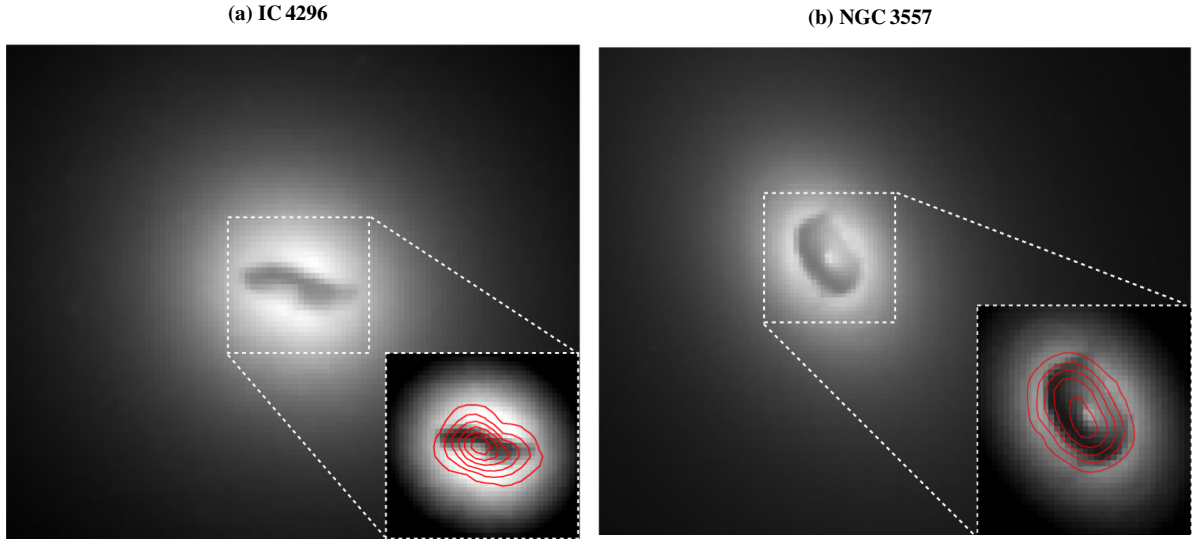
This is the first paper of a project studying a complete, volume- and flux-limited ( $z < 0.03$ ,  $S_{2.7\text{GHz}} \leq 0.25$  Jy) sample of eleven LERGs, selected from the sample of Ekers et al. (1989).

In this paper, we presented Cycle 3 ALMA  $^{12}\text{CO}(2-1)$  and 230 GHz continuum observations of nine of the eleven sample members, together with a first comparison with archival observa-

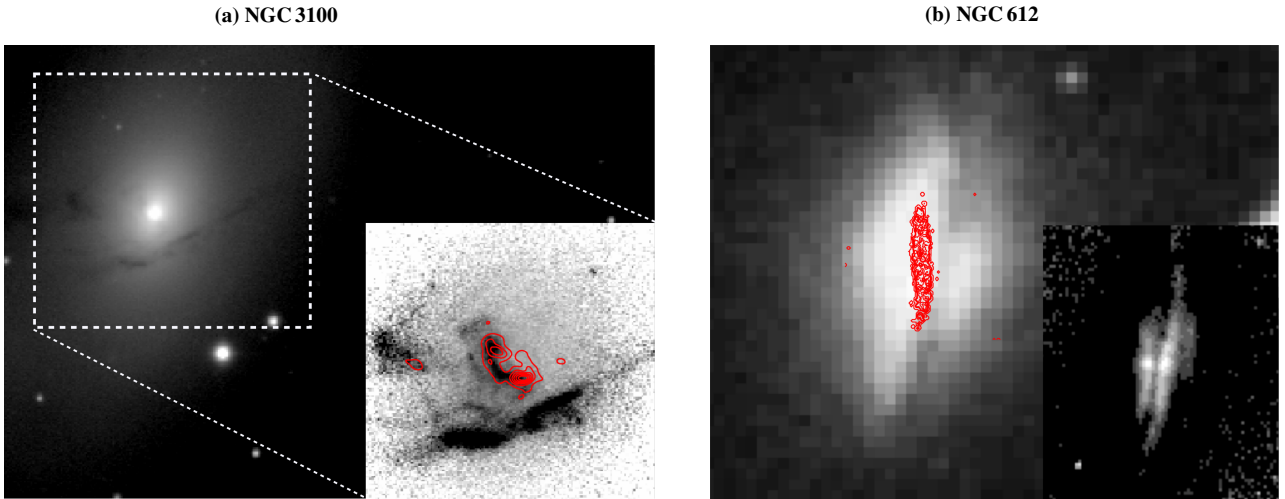
tions at other wavelengths (radio and optical). The results can be summarised as follows.

- CO was detected in six out of nine sources with a S/N ranging from 8 to 45 and typical molecular gas masses of  $10^7 - 10^8 M_\odot$ . Upper limits (obtained assuming the gas is concentrated in the inner few hundred parsecs of the galaxy) are of the order of  $10^6 M_\odot$ .
- To a first approximation, the CO is distributed in rotating disc-like structures, on typical scales from a few hundred parsecs to a few kpc.
- NGC 612 is exceptional: it shows a massive ( $2 \times 10^{10} M_\odot$ ) molecular gas disc extending  $\approx 10$  kpc along the major axis, and co-spatial with previously-known HI and stellar discs.
- NGC 3100 is characterized by a central ring-like CO morphology, with distortions and patchy structures on larger scales. The CO disc in IC 4296 is also slightly distorted.
- A comparison with available optical images shows that dust absorption and CO emission trace the same ISM component, as expected.
- Double-horned integrated CO spectral profiles are observed in all of the sources, consistent with the resolved morphology and kinematics. IC 4296 also shows a deep and narrow absorption feature against the bright continuum nuclear radio source. The CO absorption optical depth is  $\tau \approx 0.12$ . From this value we inferred an HI absorption optical depth  $\tau \approx 1.2 \times 10^{-4}$ , consistent with the non-detection of HI absorption by Morganti et al. (2001).
- The nuclei of all of the sources were detected in the 230 GHz continuum images. Six objects also show emission from jets, four of which are double-sided. Both core and extended emission components are morphologically very similar to those observed at GHz frequencies in archival VLA maps. They are likely to be dominated by synchrotron emission. No evidence of thermal emission correlated with extended dust or CO was found.
- Spectral index maps were produced for two sources (NGC 3100 and NGC 3557) having matched-resolution ALMA and VLA continuum maps (see Tables 2 and A1). The radio cores show flat spectra ( $-0.2 < \alpha < 0.2$ , for  $S \sim \nu^\alpha$ ), while the jet spectra are steeper ( $\alpha \approx -0.7$ ). This is consistent with synchrotron emission (self-absorbed in the core and optically thin in the jets). The cores of the remaining objects typically show flat spectra, consistent with partially self-absorbed synchrotron emission from the inner jets.
- A comparison between the CO mean velocity maps and the mm or cm-wavelength continuum emission gives the relative orientation of the gas rotation and jet axes, in projection. In four cases (67%) the gas discs are roughly orthogonal to the jets in projection. In two sources (33%) the disc angular momentum axis and the jet appear significantly misaligned. Despite the poor statistics, our results are consistent with previous studies, in particular with those reported by De Ruiter et al. (2002) on a similar sample of objects.
- In NGC 3100 the ring-like CO distribution shows a clear disruption to the North of the nucleus, in the direction of the northern jet, as well as signs of deviation from regular rotation (see Section 5): an interaction between the CO disc and the jets is very likely in this case.

Detailed 3D modelling of both the molecular gas discs detected with ALMA and the radio jets (using newly acquired high-resolution JVLA observations) will be presented in forthcoming papers. This will allow us to investigate further the issue of the relative orientation of the molecular gas and the radio jets, taking into proper account their inclination with respect to the plane of the sky. Comparison with resolved stellar kinematics will also help to constrain the relationship between the jet and/or disc axes and the principal



**Figure 11.** Archival HST images of (a) IC 4296 ( $7 \times 7 \text{ arcsec}^2$ ) and (b) NGC 3557 ( $11 \times 7 \text{ arcsec}^2$ ) taken in the F555W filter. In both images, the pixel scale and the image FWHM are  $0.1 \text{ arcsec pixel}^{-1}$  and  $0.08 \text{ arcsec}$ , respectively. The insets show superposed red contours of CO integrated intensity drawn at 1,3,9 times the  $3\sigma$  rms noise level. Additional information on the optical images is provided in Appendix A.



**Figure 12.** (a): Archival optical image of NGC 3100 taken with the Dupont 2.5 m Telescope using a blue filter (300–400 nm). The image scale and the resolution are  $0.26 \text{ arcsec pixel}^{-1}$  and  $0.77 \text{ arcsec}$ , respectively. The size of the panel is  $112 \times 80 \text{ arcsec}^2$ . The inset in the bottom right corner shows the B–I colour (dust absorption) map in a box of  $35 \times 35 \text{ arcsec}^2$ . The CO integrated intensity contours superimposed in red are drawn at 1,3,9....times the  $3\sigma$  rms noise level. (b): Archival optical image of NGC 612 taken with the UK Schmidt telescope at 468 nm. The image scale is  $1.7 \text{ arcsec pixel}^{-1}$  and the image size is  $80 \times 65 \text{ arcsec}^2$ . The contours of the CO integrated intensity map are superimposed in red and are drawn at 1,3,9....times the  $3\sigma$  rms noise level. The figure in the bottom right corner shows the B–I colour (dust absorption) map adapted from [Véron-Cetty & Véron \(2001\)](#). Additional information on the optical images is provided in Appendix A.

axes of the galactic potential well. In addition we are making a detailed study of NGC 3100, our best candidate for a jet/gas disc interaction. For this source we have obtained follow-up ALMA observations in Cycle 6 (project ID: 2018.1.01095.S, PI: I. Ruffa), with the primary aim of assessing the impact of the radio jets on the surrounding environment by probing the physical conditions of the molecular gas.

#### ACKNOWLEDGEMENTS

We thank the referee for useful comments. This work was partially supported by the Italian Ministero dell’Istruzione, Università

e Ricerca, through the grant Progetti Premiali 2012 – iALMA (CUP C52I13000140001). IP acknowledges support from INAF under PRIN SKA/CTA ‘FORECaST’. This paper makes use of the following ALMA data: ADS/JAO.ALMA#[2015.1.01572.S]. ALMA is a partnership of ESO (representing its member states), NSF (USA) and NINS (Japan), together with NRC (Canada), NSC and ASIAA (Taiwan), and KASI (Republic of Korea), in cooperation with the Republic of Chile. The Joint ALMA Observatory is operated by ESO, AUI/NRAO and NAOJ. The National Radio Astronomy Observatory is a facility of the National Science Foundation operated under cooperative agreement by Associated Universities, Inc. The scientific results reported in this article are also based on photographic data obtained using The UK Schmidt Telescope. The UK

Schmidt Telescope was operated by the Royal Observatory Edinburgh, with funding from the UK Science and Engineering Research Council, until 1988 June, and thereafter by the Anglo-Australian Observatory. Original plate material is copyright (c) the Royal Observatory Edinburgh and the Anglo-Australian Observatory. The plates were processed into the present compressed digital form with their permission. This paper has also made use of the NASA/IPAC Extragalactic Database (NED) which is operated by the Jet Propulsion Laboratory, California Institute of Technology under contract with NASA. This research used the facilities of the Canadian Astronomy Data Centre operated by the National Research Council of Canada with the support of the Canadian Space Agency.

## REFERENCES

- Alatalo K., et al., 2011, *ApJ*, **735**, 88
- Alatalo K., et al., 2013, *MNRAS*, **432**, 1796
- Alexander D. M., Hickox R. C., 2012, *New Astron. Rev.*, **56**, 93
- Allen S. W., Dunn R. J. H., Fabian A. C., Taylor G. B., Reynolds C. S., 2006, *MNRAS*, **372**, 21
- Baldi R. D., Giroletti M., Capetti A., Giovannini G., Casasola V., Pérez-Torres M. A., Kuno N., 2015, *A&A*, **574**, A65
- Balmaverde B., Capetti A., 2006, *A&A*, **447**, 97
- Bardeen J. M., Petterson J. A., 1975, *ApJ*, **195**, L65
- Best P. N., Heckman T. M., 2012, *MNRAS*, **421**, 1569
- Birkinshaw M., Davies R. L., 1985, *ApJ*, **291**, 32
- Blandford R. D., Znajek R. L., 1977, *MNRAS*, **179**, 433
- Boizelle B. D., Barth A. J., Darling J., Baker A. J., Buote D. A., Ho L. C., Walsh J. L., 2017, *ApJ*, **845**, 170
- Bolatto A. D., Wolfire M., Leroy A. K., 2013, *ARA&A*, **51**, 207
- Bondi H., 1952, *MNRAS*, **112**, 195
- Bosma A., 1981a, *AJ*, **86**, 1791
- Bosma A., 1981b, *AJ*, **86**, 1825
- Braine J., Combes F., 1992, *A&A*, **264**, 433
- Burke-Spolaor S., Ekers R. D., Massardi M., Murphy T., Partridge B., Ricci R., Sadler E. M., 2009, *MNRAS*, **395**, 504
- Capetti A., Balmaverde B., 2005, *A&A*, **440**, 73
- Cappellari M., Verolme E. K., van der Marel R. P., Verdoes Kleijn G. A., Illingworth G. D., Franx M., Carollo C. M., de Zeeuw P. T., 2002, *ApJ*, **578**, 787
- Cappellari M., et al., 2011, *MNRAS*, **413**, 813
- Ciotti L., 2009, *Nuovo Cimento Rivista Serie*, **32**, 1
- Ciotti L., Ostriker J. P., Proga D., 2010, *ApJ*, **717**, 708
- Colbert J. W., Mulchaey J. S., Zabludoff A. I., 2001, *AJ*, **121**, 808
- Colla G., Fanti C., Fanti R., Gioia I., Lari C., Lequeux J., Lucas R., Ulrich M. H., 1975, *A&AS*, **20**, 1
- Colless M., et al., 2003, *arXiv Astrophysics e-prints*,
- Collobert M., Sarzi M., Davies R. L., Kuntschner H., Colless M., 2006, *MNRAS*, **370**, 1213
- Combes F., 2017, *Frontiers in Astronomy and Space Sciences*, **4**, 10
- Combes F., et al., 2013, *A&A*, **558**, A124
- Dame T. M., 2011, preprint, ([arXiv:1101.1499](https://arxiv.org/abs/1101.1499))
- David L. P., et al., 2014, *ApJ*, **792**, 94
- Davis T. A., et al., 2011, *MNRAS*, **417**, 882
- Davis T. A., et al., 2015, *MNRAS*, **454**, 657
- Davis T. A., Bureau M., Onishi K., Cappellari M., Iguchi S., Sarzi M., 2017, *MNRAS*, **468**, 4675
- De Koff S., et al., 2000, *ApJS*, **129**, 33
- De Ruiter H. R., Parma P., Capetti A., Fanti R., Morganti R., 2002, *A&A*, **396**, 857
- De Vaucouleurs G., 1976, in Dickens R. J., Perry J. E., Smith F. G., King I. R., eds, *Royal Greenwich Observatory Bulletins Vol. 182, The Galaxy and the Local Group*. p. 177
- Debuhr J., Quataert E., Ma C.-P., 2012, *MNRAS*, **420**, 2221
- Duah Asabere B., Horellou C., Jarrett T. H., Winkler H., 2016, *A&A*, **592**, A20
- Ekers R. D., Goss W. M., Kotanyi C. G., Skellern D. J., 1978, *A&A*, **69**, L21
- Ekers R. D., et al., 1989, *MNRAS*, **236**, 737
- Emonts B. H. C., Morganti R., Oosterloo T. A., Holt J., Tadhunter C. N., van der Hulst J. M., Ojha R., Sadler E. M., 2008, *MNRAS*, **387**, 197
- Fabian A. C., 2012, *ARA&A*, **50**, 455
- Fanaroff B. L., Riley J. M., 1974, *MNRAS*, **167**, 31P
- Fasano G., Falomo R., Scarpa R., 1996, *MNRAS*, **282**, 40
- Feretti L., Perley R., Giovannini G., Andernach H., 1999, *A&A*, **341**, 29
- Gallimore J. F., Axon D. J., O’Dea C. P., Baum S. A., Pedlar A., 2006, *AJ*, **132**, 546
- Gaspari M., Ruszkowski M., Oh S. P., 2013, *MNRAS*, **432**, 3401
- Gaspari M., Brighenti F., Temi P., 2015, *A&A*, **579**, A62
- Gaspari M., Temi P., Brighenti F., 2017, *MNRAS*, **466**, 677
- Govoni F., Falomo R., Fasano G., Scarpa R., 2000a, *A&AS*, **143**, 369
- Govoni F., Falomo R., Fasano G., Scarpa R., 2000b, *A&A*, **353**, 507
- Hardcastle M. J., Evans D. A., Croston J. H., 2007, *MNRAS*, **376**, 1849
- Harrison C. M., 2017, *Nature Astronomy*, **1**, 0165
- Harrison C. M., Costa T., Tadhunter C. N., Flütsch A., Kakkad D., Perna M., Vietri G., 2018, *Nature Astronomy*, **2**, 198
- Heckman T. M., Best P. N., 2014, *ARA&A*, **52**, 589
- Hernquist L., Barnes J. E., 1991, *Nature*, **354**, 210
- Heyer M., Krawczyk C., Duval J., Jackson J. M., 2009, *ApJ*, **699**, 1092
- Horellou C., Black J. H., van Gorkom J. H., Combes F., van der Hulst J. M., Charmandaris V., 2001, *A&A*, **376**, 837
- Huchra J. P., Geller M. J., 1982, *ApJ*, **257**, 423
- Jones D. H., et al., 2009, *MNRAS*, **399**, 683
- Kaczmarek J. F., Purcell C. R., Gaensler B. M., Sun X., O’Sullivan S. P., McClure-Griffiths N. M., 2018, *MNRAS*, **476**, 1596
- Killeen N. E. B., Bicknell G. V., Ekers R. D., 1986, *ApJ*, **302**, 306
- King A., Nixon C., 2018, *ApJ*, **857**, L7
- King A., Pounds K., 2015, *ARA&A*, **53**, 115
- King A. R., Pringle J. E., 2007, *MNRAS*, **377**, L25
- Kinney A. L., Schmitt H. R., Clarke C. J., Pringle J. E., Ulvestad J. S., Antonucci R. R. J., 2000, *ApJ*, **537**, 152
- Koay J. Y., Vestergaard M., Casasola V., Lawther D., Peterson B. M., 2016, *MNRAS*, **455**, 2745
- Kotanyi C. G., Ekers R. D., 1979, *A&A*, **73**, L1
- Laing R. A., Bridle A. H., 2013, *MNRAS*, **432**, 1114
- Laing R. A., Bridle A. H., 2014, *MNRAS*, **437**, 3405
- Lauer T. R., et al., 2005, *AJ*, **129**, 2138
- Laurikainen E., Salo H., Buta R., Knapen J., Speltincx T., Block D., 2006, *AJ*, **132**, 2634
- Liska M., Tchekhovskoy A., Ingram A., van der Klis M., 2018, preprint, ([arXiv:1810.00883](https://arxiv.org/abs/1810.00883))
- Maccagni F. M., Morganti R., Oosterloo T. A., Mahony E. K., 2014, *A&A*, **571**, A67
- Maccagni F. M., Morganti R., Oosterloo T. A., Oonk J. B. R., Emonts B. H. C., 2018, *A&A*, **614**, A42
- Mao M. Y., et al., 2015, *MNRAS*, **446**, 4176
- McKinney J. C., Tchekhovskoy A., Blandford R. D., 2012, *MNRAS*, **423**, 3083
- McMullin J. P., Waters B., Schiebel D., Young W., Golap K., 2007, in Shaw R. A., Hill F., Bell D. J., eds, *Astronomical Society of the Pacific Conference Series Vol. 376, Astronomical Data Analysis Software and Systems XVI*. p. 127
- Morganti R., Killeen N. E. B., Tadhunter C. N., 1993, *MNRAS*, **263**, 1023
- Morganti R., Oosterloo T. A., Tadhunter C. N., van Moorsel G., Killeen N., Wills K. A., 2001, *MNRAS*, **323**, 331
- Morganti R., Holt J., Tadhunter C., Ramos Almeida C., Dicken D., Inskip K., Oosterloo T., Tzioumis T., 2011, *A&A*, **535**, A97
- Nayakshin S., Power C., King A. R., 2012, *ApJ*, **753**, 15
- O’Sullivan E., Sanderson A. J. R., Ponman T. J., 2007, *MNRAS*, **380**, 1409
- Ocaña Flaquer B., Leon S., Combes F., Lim J., 2010, *A&A*, **518**, A9
- Okuda T., Kohno K., Iguchi S., Nakanishi K., 2005, *ApJ*, **620**, 673
- Oosterloo T., Raymond Oonk J. B., Morganti R., Combes F., Dasyra K., Salomé P., Vlahakis N., Tadhunter C., 2017, *A&A*, **608**, A38



- Parma P., Murgia M., Morganti R., Capetti A., de Ruiter H. R., Fanti R., 1999, *A&A*, **344**, 7
- Prandoni I., Laing R. A., Parma P., de Ruiter H. R., Montenegro-Montes F. M., Wilson T. L., 2007, in Baker A. J., Glenn J., Harris A. I., Mangum J. G., Yun M. S., eds, *Astronomical Society of the Pacific Conference Series Vol. 375, From Z-Machines to ALMA: (Sub)Millimeter Spectroscopy of Galaxies*. p. 271 ([arXiv:astro-ph/0608577](https://arxiv.org/abs/astro-ph/0608577))
- Prandoni I., Laing R. A., de Ruiter H. R., Parma P., 2010, *A&A*, **523**, A38
- Rau U., Cornwell T. J., 2011, *A&A*, **532**, A71
- Rees M. J., 1978, *Nature*, **275**, 516
- Ricci T. V., Steiner J. E., Menezes R. B., 2015, *MNRAS*, **451**, 3728
- Rupen M. P., 1999, in Taylor G. B., Carilli C. L., Perley R. A., eds, *Astronomical Society of the Pacific Conference Series Vol. 180, Synthesis Imaging in Radio Astronomy II*. p. 229
- Russell H. R., McNamara B. R., Edge A. C., Hogan M. T., Main R. A., Vantyghem A. N., 2013, *MNRAS*, **432**, 530
- Sandage A., Brucato R., 1979, *AJ*, **84**, 472
- Sanders R. H., 1981, *Nature*, **294**, 427
- Sandstrom K. M., et al., 2013, *ApJ*, **777**, 5
- Scheuer P. A. G., Feiler R., 1996, *MNRAS*, **282**, 291
- Schmitt H. R., Ulvestad J. S., Kinney A. L., Pringle J. E., Clarke C. J., Antonucci R. R. J., 2001, in Knapen J. H., Beckman J. E., Shlosman I., Mahoney T. J., eds, *Astronomical Society of the Pacific Conference Series Vol. 249, The Central Kiloparsec of Starbursts and AGN: The La Palma Connection*. p. 230
- Schmitt H. R., Pringle J. E., Clarke C. J., Kinney A. L., 2002, *ApJ*, **575**, 150
- Shabala S. S., et al., 2012, *MNRAS*, **423**, 59
- Smith R. J., Lucey J. R., Hudson M. J., Schlegel D. J., Davies R. L., 2000, *MNRAS*, **313**, 469
- Sparks W. B., Wall J. V., Thorne D. J., Jorden P. R., van Breda I. G., Rudd P. J., Jorgensen H. E., 1985, *MNRAS*, **217**, 87
- Tadhunter C. N., Morganti R., di Serego-Alighieri S., Fosbury R. A. E., Danziger I. J., 1993, *MNRAS*, **263**, 999
- Temi P., Amblard A., Gitti M., Brighenti F., Gaspari M., Mathews W. G., David L., 2018, *ApJ*, **858**, 17
- Tingay S. J., Edwards P. G., 2015, *MNRAS*, **448**, 252
- Tingay S. J., Edwards P. G., Tzioumis A. K., 2003, *MNRAS*, **346**, 327
- Tremblay G. R., et al., 2016, *Nature*, **534**, 218
- Van Dokkum P. G., Franx M., 1995, *AJ*, **110**, 2027
- Van Velzen S., Falcke H., Schellart P., Nierstenhöfer N., Kampert K.-H., 2012, *A&A*, **544**, A18
- Van de Voort F., Davis T. A., Kereš D., Quataert E., Faucher-Giguère C.-A., Hopkins P. F., 2015, *MNRAS*, **451**, 3269
- Van de Voort F., et al., 2018, *MNRAS*, **476**, 122
- Venturi T., Morganti R., Tzioumis T., Reynolds J., 2000, *A&A*, **363**, 84
- Verdoes Kleijn G. A., de Zeeuw P. T., 2005, *A&A*, **435**, 43
- Verdoes Kleijn G. A., van der Marel R. P., Carollo C. M., de Zeeuw P. T., 2000, *AJ*, **120**, 1221
- Véron-Cetty M. P., Véron P., 2001, *A&A*, **375**, 791
- Wada K., Papadopoulos P. P., Spaans M., 2009, *ApJ*, **702**, 63
- Westerlund B. E., Stokes N. R., 1966, *ApJ*, **145**, 354
- Wrobel J. M., Walker R. C., 1999, in Taylor G. B., Carilli C. L., Perley R. A., eds, *Astronomical Society of the Pacific Conference Series Vol. 180, Synthesis Imaging in Radio Astronomy II*. p. 171
- Young L. M., 2005, *ApJ*, **634**, 258
- Young L. M., et al., 2011, *MNRAS*, **414**, 940
- Zhuravlev V. V., Ivanov P. B., Fragile P. C., Morales Teixeira D., 2014, *ApJ*, **796**, 104
- van der Kruit P. C., Shostak G. S., 1982, *A&A*, **105**, 351

## APPENDIX A: ANCILLARY DATA

We provide here a brief description of the archival radio and optical images referred to in this paper.

## A1 VLA

### A1.1 Observations and data reduction

In order to compare the core and jet emission detected at 230 GHz with that visible at lower frequencies, we extracted VLA data at 4.9, 8.5 or 14.9 GHz for our target sources from the NRAO archive. These frequencies were chosen to give a reasonable compromise between high resolution (to match our ALMA images as closely as possible) and sensitivity to extended structure. The datasets are inevitably heterogeneous, with wide ranges of resolution, uv coverage and integration time. In particular, the only data available for NGC 612 have very low spatial resolution. We calibrated the archival data using standard methods, with the flux-density scale set using observations of 3C 48 or 3C 286. Polarization leakage was calibrated for NGC 612 and IC 4296 and the absolute **E**-vector polarization position angle was set for these sources using observations of 3C 286. For NGC 3557, we combined data from three VLA configurations and for NGC 7075 and ESO443–G024 we show images with two combinations of frequency and resolution; in all other cases useful data were only available for a single configuration and frequency. All of the datasets were self-calibrated in phase and amplitude and the final images were made using single or multi-scale CLEAN depending on the complexity of the brightness distribution. The datasets and image parameters are listed in Table A1. We display the linear polarization as vectors with lengths proportional to the degree of polarization,  $p = P/I$ , where  $P$  and  $I$  are polarized and total intensity, respectively, orientated along the local **E**-vector direction.

The highest-resolution images available are plotted together with the corresponding 230-GHz images in Figure 1. Lower-resolution images of four sources, ESO443–G024, IC 4296, NGC 612 and NGC 7075, are significantly deeper than any published to date and/or include linear polarization for the first time. These are therefore shown below (Fig. A1 – A3).

### A1.2 NGC 612

The image of NGC 612 shown in Figure A1 was made from the same dataset as that analysed by Morganti et al. (1993), but has a significantly lower rms noise level. In addition, linear polarization has been calibrated and the image has been corrected for attenuation by the primary beam. The effects of Faraday rotation on the degree and direction of polarization are 4.9 GHz are very small (Kaczmarek et al. 2018). The apparent magnetic field direction (orthogonal to the plotted vectors) is circumferential in both lobes and transverse in the jets.

### A1.3 ESO443–G024 and NGC 7075

The 4.9-GHz images of ESO443–G024 and NGC 7075 (Fig. A2) show the overall structures of the sources, both of which have lobed twin-jet FR I morphologies. The jet structure of ESO443–G024 is symmetrical on large scales (Fig. A2a); side-to-side asymmetry on scales of a few arcseconds is evident from Fig. 1(f), indicating that the NW jet is approaching. For NGC 7075, the base of the NE jet appears brighter even at low resolution (Fig. A2b) and only the NE (approaching) side is visible in the high-resolution VLA and ALMA images (Fig. 1h).

**Table A1.** Archival VLA data used in this study.

Name	Code	Date	t	Config	$\nu$	$\Delta\nu$	$\theta_{\text{maj}}$	$\theta_{\text{min}}$	PA	RMS
(1)	(2)	(3)	(4)	(5)	(6)	(7)	(8)	(9)	(10)	(11)
IC 1531	AH640	1998 06 19	40	A	8460.1	100.0	0.58	0.23	-3.4	210
NGC 612	AK135	1985 10 29	12700	C/D	4860.1	100.0	13.00	13.00	-	29
PKS 0718-34	AL508	1999 10 18	45	A/B	8460.1	100.0	2.29	0.58	14.9	220
NGC 3100	AD270	1991 07 21	260	A	4860.1	100.0	0.90	0.32	-6.9	140
NGC 3557	AB289	1984 12 14	1640	A	4876.1	50.0	1.38	0.35	-12.4	53
	AW136	1985 06 22	340	B/C	4860.1	100.0				
	AB377	1987 02 16	14120	C/D	4860.1	100.0				
ESO443-G024	AJ141	1986 10 04	169	B/C	4860.1	100.0	4.13	3.62	65.9	200
	AM141	1985 02 18	460	A	14938.7	100.0	0.60	0.60	-	970
IC 4296	AE016	1982 07 09	20200	A/B	4872.6	25.0	1.58	0.93	-46.8	55
NGC 7075	AH640	1998 05 18	530	A	8460.1	100.0	0.79	0.22	-2.1	270
	AG478	1996 01 30	35	B/C	4860.1	100.0	5.06	3.59	9.7	110
IC 1459	AG674	2004 09 07	240	A	8460.1	100.0	0.80	0.17	22.2	210

*Notes.* – Columns: (1) Source name.(2) VLA proposal code. (3) Date of observation. (4) On-source integration time (scaled to 27 antennas). (5) VLA configuration (A/B, B/C and C/D are hybrid configurations with a long N arm).(6) Centre reference frequency. (7) Total bandwidth. (8) Beam major axis. (9) Beam minor axis. (10) Beam position angle. (11) Rms image noise level for  $I$ .

#### A1.4 IC 4296

This source was studied in detail by [Killeen et al. \(1986\)](#), but they did not present images for their highest-resolution 4.9-GHz dataset, which we have therefore re-reduced. The resulting total-intensity images, shown in Fig. A3, have a resolution of  $1.58 \times 0.93$  arcsec<sup>2</sup> and show the jet bases in detail. The jets are unusually symmetrical and are likely to be close to the plane of the sky. The Faraday rotations estimated for the jets by [Killeen et al. \(1986\)](#) are in the range  $-40 - 0$  rad m<sup>-2</sup>, implying that the magnitude of the rotation of the observed **E**-vectors from their intrinsic directions is  $\leq 8^\circ$ . The apparent magnetic field within  $\approx 20$  arcsec of the core (Fig. A3b) is therefore aligned with the axis on both sides of the nucleus. Figs A3(c) and (d) show polarization vectors for the SE and NW jets, respectively. The magnetic-field structure farther from the core than the flaring points at  $\approx 20$  arcsec is remarkably uniform, with an apparent field direction orthogonal to the jet axis and  $p \approx 0.3 - 0.5$ . IC 4296 and 3C 449 ([Feretti et al. 1999](#)) have remarkably symmetrical jet intensity and polarization distributions, consistent with their axes being close to the plane of the sky (e.g. [Laing & Bridle 2014](#)).

#### A2 HST

To investigate the dust-CO connection, we downloaded HST images (available only for NGC 3557 and IC 4296) from the Hubble Legacy Archive at the Canadian Astronomy Data Centre (CADC)<sup>3</sup>. This provides enhanced HST image products with an absolute astrometric accuracy  $\approx 0.3$  arcsec.

Both galaxies were observed with the HST Wide-Field and Planetary Camera 2 (WFPC2) through the F555W optical filter ( $\lambda \approx 472-595$  nm). The final image products have a pixel scale of  $0.1$  arcsec pixel<sup>-1</sup> and an image FWHM of  $0.08$  arcsec. NGC 3557 was observed on 1997 March 10 with a total on-source time of 1900 s (proposal ID: 6587), IC 4296 on 1997 July 16 with a total exposure time of 1700 s (proposal ID: 6587). Both images are documented

by [Lauer et al. \(2005\)](#) and were subsequently used by [Balmaverde & Capetti \(2006\)](#).

The HST images of NGC 3557 and IC 4296 are discussed in Section 6.4 and presented in Figure 11, where they are overlaid on CO integrated intensity maps.

#### A3 Other optical images

Archival optical images from ground-based telescopes were also available for NGC 612 and NGC 3100 (Fig. 12).

We retrieved the NGC 612 optical image from NED<sup>4</sup>. It was observed with the UK Schmidt Telescope on 1977 September 18 at  $\lambda \approx 468$  nm, with a total exposure time of 4500 s. The pixel scale is  $1.7$  arcsec pixel<sup>-1</sup>. The B-I image was derived by [Véron-Cetty & Véron \(2001\)](#) from CCD images taken with EFOSC on the ESO 3.6m Telescope.

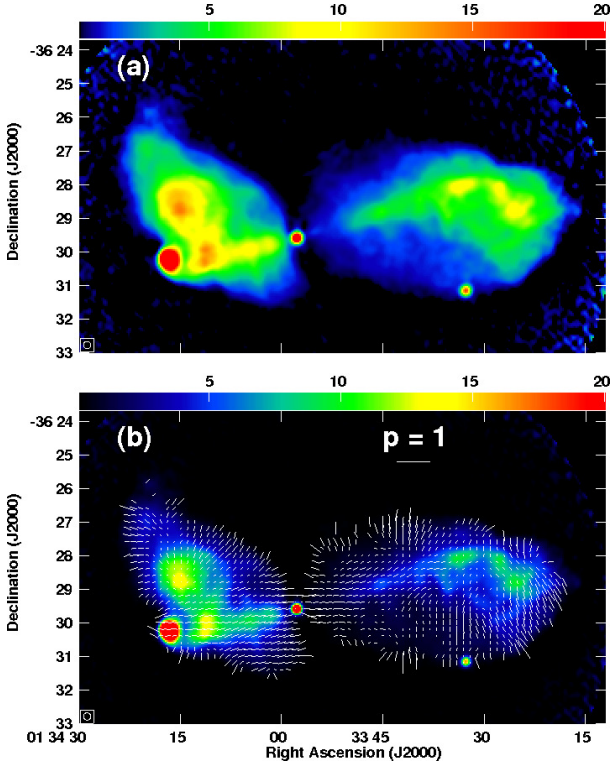
The optical images of NGC 3100 were retrieved from the Carnegie-Irvine Galaxy Survey (CGS) database<sup>5</sup>. NGC 3100 was observed with the Tek5 CCD camera of the du Pont 2.5-meter telescope at Las Campanas Observatory on 2004 April 19. The observations were made using four filters (Harris B, V, R and I;  $\lambda$  from 300 to 1100 nm). The exposure times were 120 – 360 s in each filter, with resolutions ranging from  $0.77$  arcsec (B) to  $0.62$  arcsec (I).

The multi-wavelength set of optical images available for NGC 3100 were used to produce a B-I colour map (bottom-right inset of Fig. 12a). Following [De Koff et al. \(2000\)](#) and [De Ruiter et al. \(2002\)](#), we first scaled the B image (where the dust absorption is most prominent) for the mean magnitude value measured in the I image (where the dust absorption is smallest), and then divided the B by the I image. In the resulting image we assumed that dust absorption features are present where the pixel values are  $\leq 0.85$  (i.e. where at least 15% of the emission is absorbed). In regions without absorption, the pixel values are close to unity.

<sup>3</sup> <http://www.cadc-ccda.hia-ih.nrc-cnrc.gc.ca/en/hsthl/>

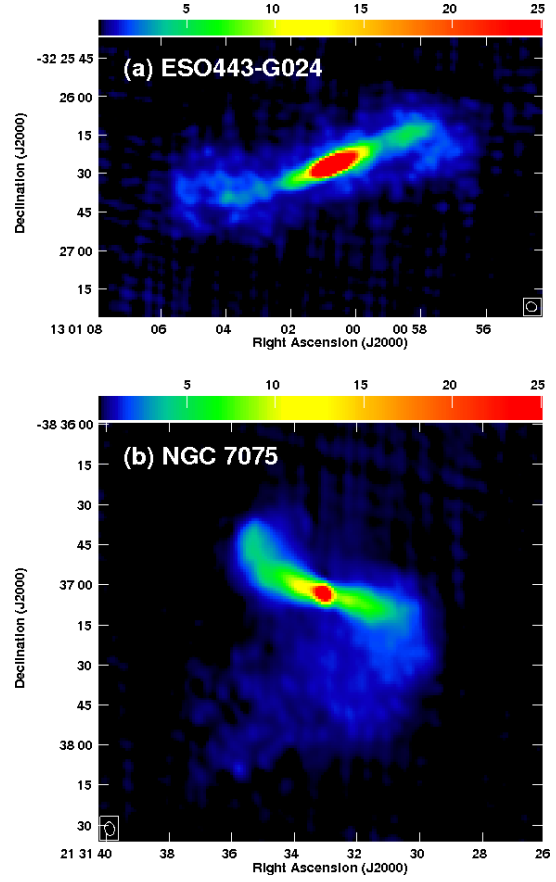
<sup>4</sup> <https://ned.ipac.caltech.edu>

<sup>5</sup> <https://cgs.obs.carnegiescience.edu/CGS/Home.html>

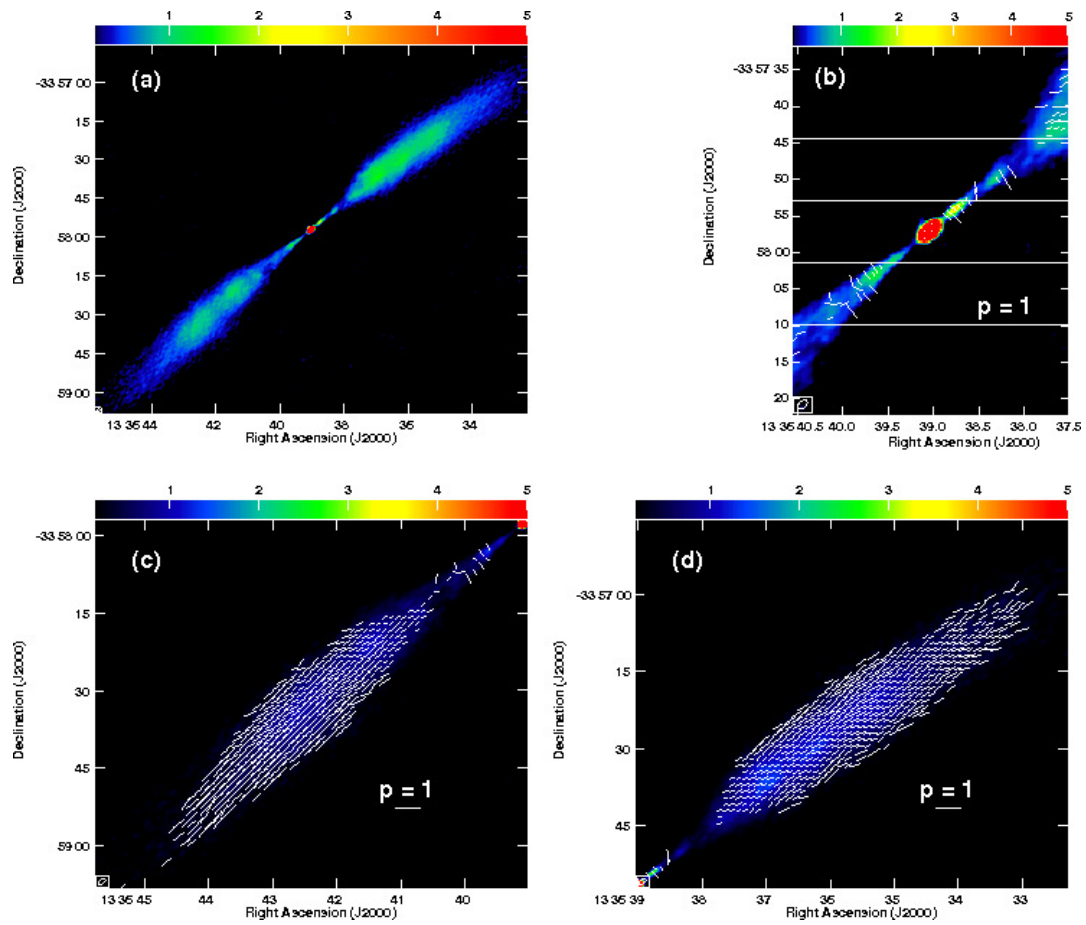


**Figure A1.** VLA images of NGC 612 at 4.9 GHz. (a) Total intensity in the range  $0 - 20 \text{ mJy beam}^{-1}$ . The circular pattern visible on the right-hand side of the plot is an artefact caused by the correction for primary-beam attenuation. (b) E-vectors with lengths proportional to degree of polarization,  $p = P/I$ , superimposed on total intensity. The vector scale is indicated by the labelled bar.

This paper has been typeset from a  $\text{\TeX}/\text{\LaTeX}$  file prepared by the author.



**Figure A2.** 4.9-GHz VLA images of (a) ESO443-G024 and (b) NGC 7075.



**Figure A3.** VLA images of IC 4296 at 4.9 GHz. (a) Total intensity. (b) E-vectors with lengths proportional to degree of polarization,  $p = P/I$ , superimposed on total intensity for the inner jets. (c) and (d) As (b), but for larger regions around the SW and NE jets, respectively. The vector scales in panels (b) – (d) are indicated by the labelled bars.